

Product datasheet for **TA332267**

SOHLH1 Rabbit Polyclonal Antibody

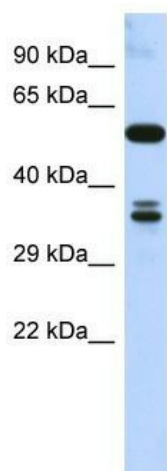
Product data:

Product Type:	Primary Antibodies
Applications:	WB
Recommended Dilution:	WB
Reactivity:	Human
Host:	Rabbit
Isotype:	IgG
Clonality:	Polyclonal
Immunogen:	The immunogen for Anti-SOHLH1 Antibody is: synthetic peptide directed towards the C-terminal region of Human SOHLH1. Synthetic peptide located within the following region: MGAAPLGEPAKEDPMLAQEAGSALGSDVDDGTSFLLTAGPSSWPGEWGP
Formulation:	Liquid. Purified antibody supplied in 1x PBS buffer with 0.09% (w/v) sodium azide and 2% sucrose. <i>Note that this product is shipped as lyophilized powder to China customers.</i>
Conjugation:	Unconjugated
Storage:	Store at -20°C as received.
Stability:	Stable for 12 months from date of receipt.
Predicted Protein Size:	36 kDa
Gene Name:	spermatogenesis and oogenesis specific basic helix-loop-helix 1
Database Link:	NP_001012415 Entrez Gene 402381 Human Q5JUK2
Background:	This gene encodes one of testis-specific transcription factors which are essential for spermatogenesis, oogenesis and folliculogenesis. This gene is located on chromosome 9. Mutations in this gene are associated with nonobstructive azoospermia. Alternatively spliced transcript variants encoding different isoforms have been found for this gene.
Synonyms:	bA100C15.3; bHLHe80; C9orf157; NOHLH; SPATA27; TEB2
Note:	Immunogen sequence homology: Human: 100%



[View online »](#)

Product images:



Host: Rabbit

Target Name: SOHLH1

Sample Tissue: 293T Cell Lysate

Antibody Dilution: 1.0 μ g/ml

Host: Rabbit; Target Name: SOHLH1; Sample
Tissue: 293T Whole Cell lysates; Antibody
Dilution: 1.0 μ g/ml