

Product datasheet for **TA332266**

CCDC66 Rabbit Polyclonal Antibody

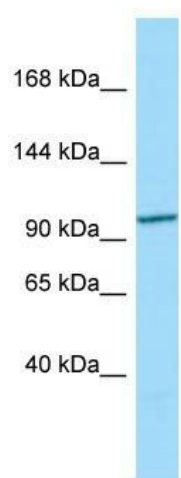
Product data:

Product Type:	Primary Antibodies
Applications:	WB
Recommended Dilution:	WB
Reactivity:	Human
Host:	Rabbit
Isotype:	IgG
Clonality:	Polyclonal
Immunogen:	The immunogen for Anti-CCDC66 Antibody is: synthetic peptide directed towards the N-terminal region of Human CCDC66. Synthetic peptide located within the following region: PLRKTGHILKSTQDTCIGSEKLLQKKPVGSETSQAKGEKNGMTFSSTKD
Formulation:	Liquid. Purified antibody supplied in 1x PBS buffer with 0.09% (w/v) sodium azide and 2% sucrose. <i>Note that this product is shipped as lyophilized powder to China customers.</i>
Conjugation:	Unconjugated
Storage:	Store at -20°C as received.
Stability:	Stable for 12 months from date of receipt.
Predicted Protein Size:	91 kDa
Gene Name:	coiled-coil domain containing 66
Database Link:	NP_001012524 Entrez Gene 285331 Human A2RUB6
Background:	The function of this protein remains unknown.
Synonyms:	DKFZp686C0433
Note:	Immunogen sequence homology: Human: 100%; Dog: 79%; Horse: 79%; Bovine: 79%



[View online »](#)

Product images:



Host: Rabbit; Target Name: CCDC66; Sample
Tissue: 293T Whole Cell lysates; Antibody
Dilution: 1.0ug/ml