

Product datasheet for **TA332265**

DDX60L Rabbit Polyclonal Antibody

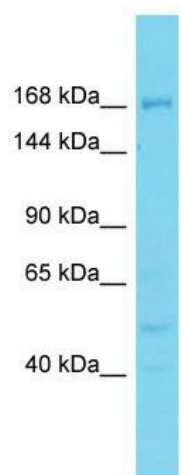
Product data:

Product Type:	Primary Antibodies
Applications:	WB
Recommended Dilution:	WB
Reactivity:	Human
Host:	Rabbit
Isotype:	IgG
Clonality:	Polyclonal
Immunogen:	The immunogen for Anti-DDX60L Antibody is: synthetic peptide directed towards the N-terminal region of Human DDX60L. Synthetic peptide located within the following region: YAYTMESTDRNQTF SKENETVIQSAYKSLIQHLEEIRVLVLATHFEHLKW
Formulation:	Liquid. Purified antibody supplied in 1x PBS buffer with 0.09% (w/v) sodium azide and 2% sucrose.
Conjugation:	Unconjugated
Storage:	Store at -20°C as received.
Stability:	Stable for 12 months from date of receipt.
Predicted Protein Size:	187 kDa
Gene Name:	DEAD-box helicase 60-like
Database Link:	NP_001012985 Entrez Gene 91351 Human Q5H9U9
Background:	The function of this protein remains unknown.
Synonyms:	DKFZp781D1175; FLJ13468; FLJ31033; FLJ39050
Note:	Immunogen sequence homology: Human: 100%; Horse: 77%



[View online »](#)

Product images:



Host: Rabbit; Target Name: DDX60L; Sample
Tissue: PANC1 Whole Cell lysates; Antibody
Dilution: 1.0ug/ml