

Product datasheet for **TA332260**

DCAF12L2 Rabbit Polyclonal Antibody

Product data:

| | |
|-------------------------|--|
| Product Type: | Primary Antibodies |
| Applications: | WB |
| Recommended Dilution: | WB |
| Reactivity: | Human |
| Host: | Rabbit |
| Isotype: | IgG |
| Clonality: | Polyclonal |
| Immunogen: | The immunogen for Anti-DCAF12L2 Antibody is: synthetic peptide directed towards the N-terminal region of Human DCAF12L2. Synthetic peptide located within the following region: KAPAVEAGAGSSSSQGLAAADGEGPLLPKKQKRPATRRRLVHYLKGREVG |
| Formulation: | Liquid. Purified antibody supplied in 1x PBS buffer with 0.09% (w/v) sodium azide and 2% sucrose. <i>Note that this product is shipped as lyophilized powder to China customers.</i> |
| Conjugation: | Unconjugated |
| Storage: | Store at -20°C as received. |
| Stability: | Stable for 12 months from date of receipt. |
| Predicted Protein Size: | 51 kDa |
| Gene Name: | DDB1 and CUL4 associated factor 12-like 2 |
| Database Link: | NP_001013650 Entrez Gene 340578 Human Q5VW00 |



[View online »](#)

Background:

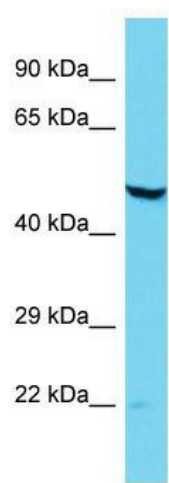
This gene encodes a member of the WD repeat protein family. WD repeats are minimally conserved regions of approximately 40 amino acids typically bracketed by Gly-His and Trp-Asp (GH-WD), which may facilitate formation of heterotrimeric or multi-protein complexes. Members of this family are involved in a variety of cellular processes, including cell cycle progression, signal transduction, apoptosis, and gene regulation. This gene appears to represent an intronless retrocopy of a related multi-exon gene located on chromosome 9. However, the CDS of this intronless gene remains intact, it is conserved in other mammalian species, it is known to be transcribed, and it is therefore thought to encode a functional protein.

Synonyms:

WDR40C

Note:

Immunogen sequence homology: Human: 100%; Pig: 85%; Dog: 79%; Rabbit: 79%

Product images:

Host: Rabbit; Target Name: DCAF12L2; Sample Tissue: Jurkat Whole Cell lysates; Antibody Dilution: 1.0ug/ml