

## Product datasheet for **TA332259**

### **DCAF12L2 Rabbit Polyclonal Antibody**

#### **Product data:**

Product Type:	Primary Antibodies
Applications:	WB
Recommended Dilution:	WB
Reactivity:	Human
Host:	Rabbit
Isotype:	IgG
Clonality:	Polyclonal
Immunogen:	The immunogen for Anti-DCAF12L2 Antibody is: synthetic peptide directed towards the C-terminal region of Human DCAF12L2. Synthetic peptide located within the following region: LDPRQRQQNIRPLCSREGGTGVRSLSFYQHIIITVGTGHGSLLFYDIRAQK
Formulation:	Liquid. Purified antibody supplied in 1x PBS buffer with 0.09% (w/v) sodium azide and 2% sucrose. <i>Note that this product is shipped as lyophilized powder to China customers.</i>
Conjugation:	Unconjugated
Storage:	Store at -20°C as received.
Stability:	Stable for 12 months from date of receipt.
Predicted Protein Size:	50 kDa
Gene Name:	DDB1 and CUL4 associated factor 12-like 2
Database Link:	<a href="#">NP_001013650</a> <a href="#">Entrez Gene 340578 Human</a> <a href="#">Q5VW00</a>



[View online »](#)

**Background:**

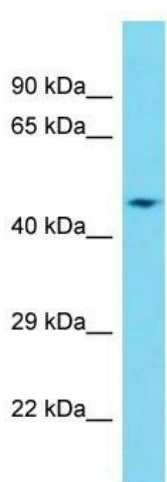
This gene encodes a member of the WD repeat protein family. WD repeats are minimally conserved regions of approximately 40 amino acids typically bracketed by Gly-His and Trp-Asp (GH-WD), which may facilitate formation of heterotrimeric or multi-protein complexes. Members of this family are involved in a variety of cellular processes, including cell cycle progression, signal transduction, apoptosis, and gene regulation. This gene appears to represent an intronless retrocopy of a related multi-exon gene located on chromosome 9. However, the CDS of this intronless gene remains intact, it is conserved in other mammalian species, it is known to be transcribed, and it is therefore thought to encode a functional protein.

**Synonyms:**

WDR40C

**Note:**

Immunogen sequence homology: Dog: 100%; Pig: 100%; Human: 100%; Rat: 93%; Mouse: 93%; Rabbit: 93%; Guinea pig: 86%

**Product images:**

Host: Rabbit

Target Name: DCAF12L2

Sample Tissue: Fetal Heart Lysate

Antibody Dilution: 1.0µg/ml

Host: Rabbit; Target Name: DCAF12L2; Sample Tissue: Fetal Heart lysates; Antibody Dilution: 1.0ug/ml