

Product datasheet for **TA332258**

Fam110a Rabbit Polyclonal Antibody

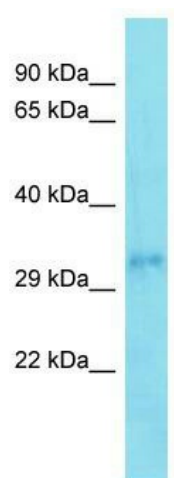
Product data:

Product Type:	Primary Antibodies
Applications:	WB
Recommended Dilution:	WB
Reactivity:	Rat
Host:	Rabbit
Isotype:	IgG
Clonality:	Polyclonal
Immunogen:	The immunogen for Anti-Fam110a Antibody is: synthetic peptide directed towards the C-terminal region of Rat Fam110a. Synthetic peptide located within the following region: SPGRPPGLQRSKSDLSEFRSRAADLERFFNFCGLDPEEARGLGVAHLAR
Formulation:	Liquid. Purified antibody supplied in 1x PBS buffer with 0.09% (w/v) sodium azide and 2% sucrose. <i>Note that this product is shipped as lyophilized powder to China customers.</i>
Conjugation:	Unconjugated
Storage:	Store at -20°C as received.
Stability:	Stable for 12 months from date of receipt.
Predicted Protein Size:	35 kDa
Gene Name:	family with sequence similarity 110, member A
Database Link:	NP_001014072 Entrez Gene 311535 Rat
Background:	The function of this protein remains unknown.
Synonyms:	bA371L19.3; C20orf55; F10; MGC2450; MGC4675; OTTHUMP00000029943; OTTHUMP00000029944; OTTHUMP00000029945
Note:	Immunogen sequence homology: Dog: 100%; Pig: 100%; Rat: 100%; Horse: 100%; Human: 100%; Mouse: 100%; Bovine: 100%; Guinea pig: 100%; Rabbit: 83%; Zebrafish: 75%



[View online »](#)

Product images:



Host: Rabbit; Target Name: Fam110a; Sample
Tissue: Rat Brain lysates; Antibody Dilution:
1.0ug/ml