

Product datasheet for **TA332256**

Histone H2A Bbd (H2AFB1) Rabbit Polyclonal Antibody

Product data:

Product Type:	Primary Antibodies
Applications:	WB
Recommended Dilution:	WB
Reactivity:	Human
Host:	Rabbit
Isotype:	IgG
Clonality:	Polyclonal
Immunogen:	The immunogen for Anti-H2AFB1 Antibody is: synthetic peptide directed towards the N-terminal region of Human H2AFB1. Synthetic peptide located within the following region: SSGAGGRGRTCSRTVRAELSFVSQVERSLREGHYAQLSRTAPVYLA AV
Formulation:	Liquid. Purified antibody supplied in 1x PBS buffer with 0.09% (w/v) sodium azide and 2% sucrose. <i>Note that this product is shipped as lyophilized powder to China customers.</i>
Conjugation:	Unconjugated
Storage:	Store at -20°C as received.
Stability:	Stable for 12 months from date of receipt.
Predicted Protein Size:	13 kDa
Gene Name:	H2A histone family member B1
Database Link:	NP_001017990 Entrez Gene 474382 Human P0C5Y9



[View online »](#)

Background:

Histones are basic nuclear proteins that are responsible for the nucleosome structure of the chromosomal fiber in eukaryotes. Nucleosomes consist of approximately 146 bp of DNA wrapped around a histone octamer composed of pairs of each of the four core histones (H2A, H2B, H3, and H4). The chromatin fiber is further compacted through the interaction of a linker histone, H1, with the DNA between the nucleosomes to form higher order chromatin structures. This gene encodes a member of the histone H2A family. This gene is part of a region that is repeated three times on chromosome X, once in intron 22 of the F8 gene and twice closer to the Xq telomere. This record represents the most centromeric copy which is in intron 22 of the F8 gene.

Synonyms:

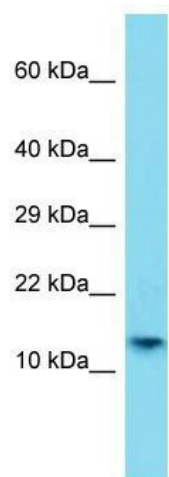
H2A.Bbd

Note:

Immunogen sequence homology: Human: 100%

Protein Pathways:

Systemic lupus erythematosus

Product images:

Host: Rabbit; Target Name: H2AFB1; Sample Tissue: A549 Whole Cell lysates; Antibody Dilution: 1.0ug/ml. H2AFB1 is supported by BioGPS gene expression data to be expressed in A549