

## Product datasheet for **TA332255**

### FRMPD2 Rabbit Polyclonal Antibody

#### Product data:

Product Type:	Primary Antibodies
Applications:	WB
Recommended Dilution:	WB
Reactivity:	Human
Host:	Rabbit
Isotype:	IgG
Clonality:	Polyclonal
Immunogen:	The immunogen for Anti-FRMPD2 Antibody is: synthetic peptide directed towards the N-terminal region of Human FRMPD2. Synthetic peptide located within the following region: LLQGQSEDEQPDASQMHVYSLGMTLYWSAGFHVPPHQPLQLCEPLHSILL
Formulation:	Liquid. Purified antibody supplied in 1x PBS buffer with 0.09% (w/v) sodium azide and 2% sucrose. <i>Note that this product is shipped as lyophilized powder to China customers.</i>
Conjugation:	Unconjugated
Storage:	Store at -20°C as received.
Stability:	Stable for 12 months from date of receipt.
Predicted Protein Size:	43 kDa
Gene Name:	FERM and PDZ domain containing 2
Database Link:	<a href="#">NP_001018081</a> <a href="#">Entrez Gene 143162 Human</a> <a href="#">Q68DX3</a>
Background:	This gene encodes a peripheral membrane protein and is located in a region of chromosome 10q that contains a segmental duplication. This copy of the gene is full-length and is in the telomeric duplicated region. Two other more centromerically proximal copies of the gene are partial and may represent pseudogenes. This full-length gene appears to function in the establishment and maintenance of cell polarization. The protein is recruited to cell-cell junctions in an E-cadherin-dependent manner, and is selectively localized at the basolateral membrane in polarized epithelial cells. Alternative splicing results in multiple transcript variants.

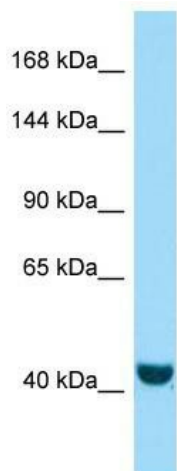


[View online »](#)

**Synonyms:** PDZD5C; PDZK4; PDZK5C

**Note:** Immunogen sequence homology: Human: 100%; Pig: 86%; Bovine: 79%; Guinea pig: 79%; Horse: 77%

**Product images:**



Host: Rabbit; Target Name: FRMPD2; Sample Tissue: A549 Whole Cell lysates; Antibody Dilution: 1.0ug/ml