

## Product datasheet for **TA332254**

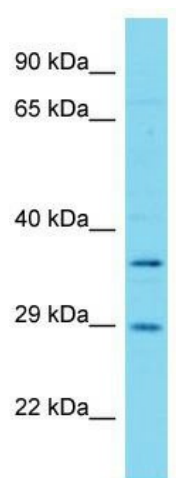
### FAHD1 Rabbit Polyclonal Antibody

#### Product data:

Product Type:	Primary Antibodies
Applications:	WB
Recommended Dilution:	WB
Reactivity:	Human
Host:	Rabbit
Isotype:	IgG
Clonality:	Polyclonal
Immunogen:	The immunogen for Anti-FAHD1 Antibody is: synthetic peptide directed towards the middle region of Human FAHD1. Synthetic peptide located within the following region: EAAAMDYVGGYALCLDMTARDVQDECKKGLPWTLAKSFTASCPVSAFVP
Formulation:	Liquid. Purified antibody supplied in 1x PBS buffer with 0.09% (w/v) sodium azide and 2% sucrose. <i>Note that this product is shipped as lyophilized powder to China customers.</i>
Conjugation:	Unconjugated
Storage:	Store at -20°C as received.
Stability:	Stable for 12 months from date of receipt.
Predicted Protein Size:	27 kDa
Gene Name:	fumarylacetoacetate hydrolase domain containing 1
Database Link:	<a href="#">NP_001018114</a> <a href="#">Entrez Gene 81889 Human</a> <a href="#">Q6P587</a>
Background:	The function of this protein remains unknown.
Synonyms:	C16orf36; YISKL
Note:	Immunogen sequence homology: Pig: 100%; Rat: 100%; Horse: 100%; Human: 100%; Bovine: 100%; Guinea pig: 100%; Mouse: 93%; Zebrafish: 93%; Yeast: 86%



[View online »](#)

**Product images:**

Host: Rabbit; Target Name: FAHD1; Sample  
Tissue: HeLa Whole cell lysates; Antibody Dilution:  
1.0ug/ml