

Product datasheet for **TA332252**

Fam107b Rabbit Polyclonal Antibody

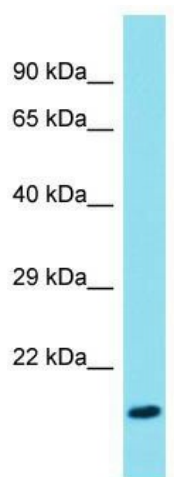
Product data:

Product Type:	Primary Antibodies
Applications:	WB
Recommended Dilution:	WB
Reactivity:	Rat
Host:	Rabbit
Isotype:	IgG
Clonality:	Polyclonal
Immunogen:	The immunogen for Anti-Fam107b Antibody is: synthetic peptide directed towards the middle region of Rat Fam107b. Synthetic peptide located within the following region: PELQKVM EKRRRDQVIKQKEEEAQKKKSDLEIELLKRQKLEQLELEKQK
Formulation:	Liquid. Purified antibody supplied in 1x PBS buffer with 0.09% (w/v) sodium azide and 2% sucrose. <i>Note that this product is shipped as lyophilized powder to China customers.</i>
Conjugation:	Unconjugated
Storage:	Store at -20°C as received.
Stability:	Stable for 12 months from date of receipt.
Predicted Protein Size:	14 kDa
Gene Name:	family with sequence similarity 107, member B
Database Link:	NP_001020205 Entrez Gene 498796 Rat Q5U4F3
Background:	The function of this protein remains unknown.
Synonyms:	C10orf45; FLJ45505; MGC11034; MGC90261
Note:	Immunogen sequence homology: Dog: 100%; Pig: 100%; Horse: 100%; Human: 100%; Bovine: 100%; Rabbit: 100%; Guinea pig: 100%; Rat: 93%; Mouse: 93%; Zebrafish: 87%



[View online »](#)

Product images:



Host: Rabbit; Target Name: Fam107b; Sample
Tissue: Rat Lung lysates; Antibody Dilution:
1.0ug/ml