

## Product datasheet for **TA332251**

### ABCF1 Rabbit Polyclonal Antibody

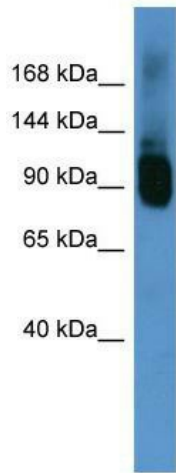
#### Product data:

Product Type:	Primary Antibodies
Applications:	IP, WB
Recommended Dilution:	IP, WB
Reactivity:	Human, Mouse
Host:	Rabbit
Isotype:	IgG
Clonality:	Polyclonal
Immunogen:	The immunogen for Anti-Abcf1 Antibody: synthetic peptide corresponding to a region of Rat. Synthetic peptide located within the following region: GGKSTKQAEKQTKEVLTRKQKQKRRKNQDEESQDPPELLKRPREYTVRFT
Formulation:	Liquid. Purified antibody supplied in 1x PBS buffer with 0.09% (w/v) sodium azide and 2% sucrose. <i>Note that this product is shipped as lyophilized powder to China customers.</i>
Conjugation:	Unconjugated
Storage:	Store at -20°C as received.
Stability:	Stable for 12 months from date of receipt.
Predicted Protein Size:	95 kDa
Database Link:	<a href="#">NP_001020262</a> <a href="#">Entrez Gene 224742 Mouse</a>
Background:	Abcf1 is required for efficient Cap- and IRES-mediated mRNA translation initiation. Abcf1 is not involved in the ribosome biogenesis.
Synonyms:	ABC27; ABC50
Note:	Immunogen sequence homology: Dog: 100%; Pig: 100%; Rat: 100%; Horse: 100%; Human: 100%; Mouse: 100%; Bovine: 100%; Rabbit: 100%; Zebrafish: 100%
Protein Families:	Druggable Genome

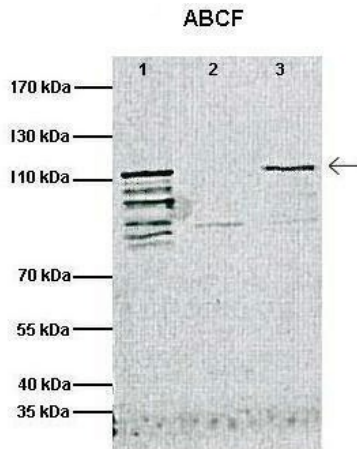


[View online »](#)

Product images:



WB Suggested Anti-Abcf1 Antibody Titration: 0.2-1 ug/ml; ELISA Titer: 1: 62500; Positive Control: Mouse Brain



Researcher: Dr. Joanna Stewart, Centre for Biological Sciences, University of Southampton; Application: IP; Species+tissue/cell type: 1: 500 ug HEK293 cell lysate transfected with ABCF1 wt, 2: 500 ug HEK293 cell lysate untransfected, 3: 500 ug HEK293 cell

See IP 1 Data and customer Feedback for more Information