

Product datasheet for **TA332250**

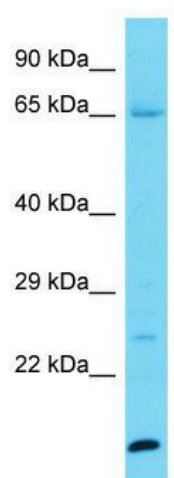
KPRP Rabbit Polyclonal Antibody

Product data:

Product Type:	Primary Antibodies
Applications:	WB
Recommended Dilution:	WB
Reactivity:	Human
Host:	Rabbit
Isotype:	IgG
Clonality:	Polyclonal
Immunogen:	The immunogen for Anti-KPRP Antibody is: synthetic peptide directed towards the C-terminal region of Human KPRP. Synthetic peptide located within the following region: PHRLDTEAPYCGPSSYNQGQESGAGCGPGDVPERRGQDGHGDQGNFAAG
Formulation:	Liquid. Purified antibody supplied in 1x PBS buffer with 0.09% (w/v) sodium azide and 2% sucrose.
Conjugation:	Unconjugated
Storage:	Store at -20°C as received.
Stability:	Stable for 12 months from date of receipt.
Predicted Protein Size:	64 kDa
Gene Name:	keratinocyte proline rich protein
Database Link:	NP_001020402 Entrez Gene 448834 Human Q5T749
Background:	The function of this protein remains unknown.
Synonyms:	C1orf45
Note:	Immunogen sequence homology: Human: 100%



[View online »](#)

Product images:

Host: Rabbit; Target Name: KPRP; Sample Tissue: Jurkat Whole Cell lysates; Antibody Dilution: 1.0ug/ml