

Product datasheet for TA332249

PGAM4 Rabbit Polyclonal Antibody

Product data:

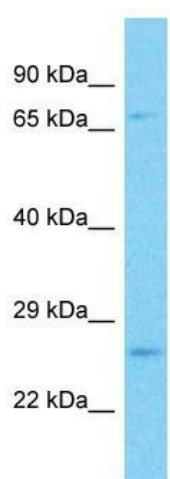
Product Type:	Primary Antibodies
Applications:	WB
Recommended Dilution:	WB
Reactivity:	Human
Host:	Rabbit
Isotype:	IgG
Clonality:	Polyclonal
Immunogen:	The immunogen for Anti-PGAM4 Antibody is: synthetic peptide directed towards the C-terminal region of Human PGAM4. Synthetic peptide located within the following region: KDRRYADLTEDQLPSYESPKDTIARALPFWNEEIVPQIKEGKRVLIAAHG
Formulation:	Liquid. Purified antibody supplied in 1x PBS buffer with 0.09% (w/v) sodium azide and 2% sucrose. <i>Note that this product is shipped as lyophilized powder to China customers.</i>
Conjugation:	Unconjugated
Storage:	Store at -20°C as received.
Stability:	Stable for 12 months from date of receipt.
Predicted Protein Size:	27 kDa
Gene Name:	phosphoglycerate mutase family member 4
Database Link:	NP_001025062 Entrez Gene 441531 Human Q8N0Y7
Background:	This intronless gene appears to have arisen from a retrotransposition event, yet it is thought to be an expressed, protein-coding gene. The encoded protein is a member of the phosphoglycerate mutase family, a set of enzymes that catalyze the transfer of a phosphate group from 3-phosphoglycerate to 2-phosphoglycerate.
Synonyms:	dj1000K24.1; PGAM-B; PGAM1; PGAM3
Note:	Immunogen sequence homology: Human: 100%; Dog: 86%; Pig: 86%; Rat: 86%; Horse: 86%; Mouse: 86%; Bovine: 86%; Rabbit: 86%; Zebrafish: 86%; Guinea pig: 86%



[View online »](#)

Protein Pathways: Glycolysis / Gluconeogenesis, Metabolic pathways

Product images:



Host: Rabbit
Target Name: PGAM4
Sample Tissue: 293T Cell Lysate
Antibody Dilution: 1.0 μ g/ml

Host: Rabbit; Target Name: PGAM4; Sample Tissue: 293T Whole Cell lysates; Antibody Dilution: 1.0 μ g/ml