

## Product datasheet for **TA332248**

### GSTCD Rabbit Polyclonal Antibody

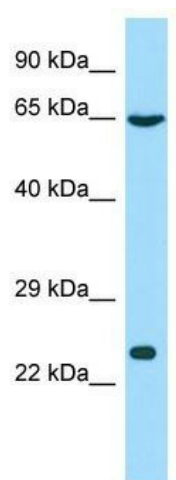
#### Product data:

Product Type:	Primary Antibodies
Applications:	WB
Recommended Dilution:	WB
Reactivity:	Human
Host:	Rabbit
Isotype:	IgG
Clonality:	Polyclonal
Immunogen:	The immunogen for Anti-GSTCD Antibody is: synthetic peptide directed towards the N-terminal region of Human GSTCD. Synthetic peptide located within the following region: LRESSDQPPTIPVEILQLEKKLSEPVRVHNDKLRQKQKADGVGPP
Formulation:	Liquid. Purified antibody supplied in 1x PBS buffer with 0.09% (w/v) sodium azide and 2% sucrose. <i>Note that this product is shipped as lyophilized powder to China customers.</i>
Conjugation:	Unconjugated
Storage:	Store at -20°C as received.
Stability:	Stable for 12 months from date of receipt.
Predicted Protein Size:	70 kDa
Gene Name:	glutathione S-transferase C-terminal domain containing
Database Link:	<a href="#">NP_001026890</a> <a href="#">Entrez Gene 79807 Human</a> <a href="#">Q8NEC7</a>
Background:	The function of this protein remains unknown.
Synonyms:	DKFZp686110174; FLJ13273
Note:	Immunogen sequence homology: Rat: 100%; Human: 100%; Rabbit: 100%; Dog: 93%; Bovine: 93%; Mouse: 92%; Pig: 86%; Horse: 86%; Guinea pig: 85%
Protein Families:	Druggable Genome



[View online »](#)

## Product images:



Host: Rabbit; Target Name: GSTCD; Sample  
Tissue: HeLa Whole cell lysates; Antibody Dilution:  
1.0ug/ml