

Product datasheet for **TA332246**

WIPI2 Rabbit Polyclonal Antibody

Product data:

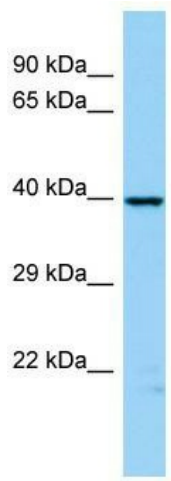
Product Type:	Primary Antibodies
Applications:	WB
Recommended Dilution:	WB
Reactivity:	Human
Host:	Rabbit
Isotype:	IgG
Clonality:	Polyclonal
Immunogen:	The immunogen for Anti-WIPI2 Antibody is: synthetic peptide directed towards the C-terminal region of Human WIPI2. Synthetic peptide located within the following region: AFSMDGMFLSASSNTETVHIFKLETVKEKPPEEPTWTGYFGKVLMASTS
Formulation:	Liquid. Purified antibody supplied in 1x PBS buffer with 0.09% (w/v) sodium azide and 2% sucrose. <i>Note that this product is shipped as lyophilized powder to China customers.</i>
Conjugation:	Unconjugated
Storage:	Store at -20°C as received.
Stability:	Stable for 12 months from date of receipt.
Predicted Protein Size:	42 kDa
Gene Name:	WD repeat domain, phosphoinositide interacting 2
Database Link:	NP_001028692 Entrez Gene 26100 Human Q9Y4P8
Background:	WD40 repeat proteins are key components of many essential biologic functions. They regulate the assembly of multiprotein complexes by presenting a beta-propeller platform for simultaneous and reversible protein-protein interactions. Members of the WIPI subfamily of WD40 repeat proteins, such as WIPI2, have a 7-bladed propeller structure and contain a conserved motif for interaction with phospholipids.
Synonyms:	ATG18B; Atg21; CGI-50; WIPI-2



[View online »](#)

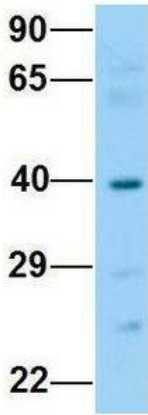
Note: Immunogen sequence homology: Pig: 100%; Rat: 100%; Human: 100%; Rabbit: 100%; Guinea pig: 100%; Dog: 93%; Bovine: 93%; Horse: 86%; Mouse: 86%; Zebrafish: 79%

Product images:



Host: Rabbit; Target Name: WIPI2; Sample Tissue: OVCAR-3 Whole Cell lysates; Antibody Dilution: 1.0ug/ml

WIPI2



Rabbit Anti-WIPI2
Sample Type: Human Fetal Lung
Antibody Concentration: 1ug/mL

Host: Rabbit; Target Name: WIPI2; Sample Tissue: Human Fetal Lung; Antibody Dilution: 1.0ug/ml