

Product datasheet for **TA332244**

DMAP1 Rabbit Polyclonal Antibody

Product data:

Product Type:	Primary Antibodies
Applications:	WB
Recommended Dilution:	WB
Reactivity:	Human
Host:	Rabbit
Isotype:	IgG
Clonality:	Polyclonal
Immunogen:	The immunogen for Anti-DMAP1 Antibody: synthetic peptide directed towards the N terminal of human DMAP1. Synthetic peptide located within the following region: DAWTKAETDHLFDLSRRFDLRFVVIH DRYDHQQFKKRSVEDLKERYHIC
Formulation:	Liquid. Purified antibody supplied in 1x PBS buffer with 0.09% (w/v) sodium azide and 2% sucrose. <i>Note that this product is shipped as lyophilized powder to China customers.</i>
Conjugation:	Unconjugated
Storage:	Store at -20°C as received.
Stability:	Stable for 12 months from date of receipt.
Predicted Protein Size:	51 kDa
Gene Name:	DNA methyltransferase 1 associated protein 1
Database Link:	NP_001029196 Entrez Gene 55929 Human Q9NPF5



[View online »](#)

Background:

DMAP1 is a subunit of several, distinct complexes involved in the repression or activation of transcription. The encoded protein can independently repress transcription and is targeted to replication foci throughout S phase by interacting directly with the N-terminus of DNA methyltransferase 1. During late S phase, histone deacetylase 2 is added to this complex, providing a means to deacetylate histones in transcriptionally inactive heterochromatin following replication. The encoded protein is also a component of the nucleosome acetyltransferase of H4 complex and interacts with the transcriptional corepressor tumor susceptibility gene 101 and the pro-apoptotic death-associated protein 6, among others. Alternatively spliced transcript variants encoding the same protein have been described.

Synonyms:

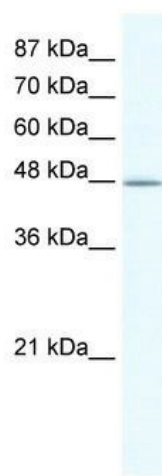
DNMAP1; DNMTAP1; EAF2; MEAF2; SWC4

Note:

Immunogen sequence homology: Dog: 100%; Pig: 100%; Rat: 100%; Horse: 100%; Human: 100%; Mouse: 100%; Bovine: 100%; Rabbit: 100%; Guinea pig: 100%; Zebrafish: 86%

Protein Families:

Transcription Factors

Product images:

WB Suggested Anti-DMAP1 Antibody Titration:
1.25ug/ml; Positive Control: HepG2 cell lysate