

Product datasheet for **TA332243**

ACOT6 Rabbit Polyclonal Antibody

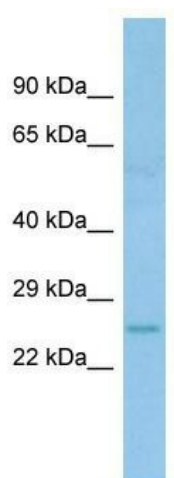
Product data:

Product Type:	Primary Antibodies
Applications:	WB
Recommended Dilution:	WB
Reactivity:	Human
Host:	Rabbit
Isotype:	IgG
Clonality:	Polyclonal
Immunogen:	The immunogen for Anti-ACOT6 Antibody is: synthetic peptide directed towards the C-terminal region of Human ACOT6. Synthetic peptide located within the following region: ASVHAVLGEAIFYGGEPKAHNSKAQVDAWQQIQTFHKLNGKKSVKHSKI
Formulation:	Liquid. Purified antibody supplied in 1x PBS buffer with 0.09% (w/v) sodium azide and 2% sucrose.
Conjugation:	Unconjugated
Storage:	Store at -20°C as received.
Stability:	Stable for 12 months from date of receipt.
Predicted Protein Size:	23 kDa
Gene Name:	acyl-CoA thioesterase 6
Database Link:	NP_001032239 Entrez Gene 641372 Human Q3I5F7
Background:	The function of this protein remains unknown.
Synonyms:	C14orf42; c14_5530
Note:	Immunogen sequence homology: Human: 100%; Pig: 93%; Horse: 93%; Rat: 86%; Bovine: 86%



[View online »](#)

Product images:



Host: Rabbit; Target Name: ACOT6; Sample
Tissue: Fetal Lung lysates; Antibody Dilution:
1.0ug/ml