

Product datasheet for **TA332241**

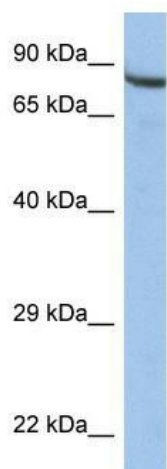
ZNF630 Rabbit Polyclonal Antibody

Product data:

Product Type:	Primary Antibodies
Applications:	WB
Recommended Dilution:	WB
Reactivity:	Human
Host:	Rabbit
Isotype:	IgG
Clonality:	Polyclonal
Immunogen:	The immunogen for Anti-ZNF630 Antibody: synthetic peptide directed towards the middle region of human ZNF630. Synthetic peptide located within the following region: VQYKKFQAREKPNVCSMCGKAFIKKSQLIIHQRIHTGEKPYVCGDCRKAF
Formulation:	Liquid. Purified antibody supplied in 1x PBS buffer with 0.09% (w/v) sodium azide and 2% sucrose. <i>Note that this product is shipped as lyophilized powder to China customers.</i>
Conjugation:	Unconjugated
Storage:	Store at -20°C as received.
Stability:	Stable for 12 months from date of receipt.
Predicted Protein Size:	76 kDa
Gene Name:	zinc finger protein 630
Database Link:	NP_001032824 Entrez Gene 57232 Human Q2M218
Background:	ZNF630 belongs to the krueppel C2H2-type zinc-finger protein family and may be involved in transcriptional regulation.
Synonyms:	dJ54B20.2
Note:	Immunogen sequence homology: Dog: 100%; Pig: 100%; Rat: 100%; Horse: 100%; Human: 100%; Bovine: 100%; Rabbit: 100%; Guinea pig: 100%; Mouse: 92%



[View online »](#)

Product images:

WB Suggested Anti-ZNF630 Antibody Titration:
0.2-1 ug/ml; ELISA Titer: 1: 12500; Positive
Control: HepG2 cell lysate