

Product datasheet for **TA332239**

ATAD3C Rabbit Polyclonal Antibody

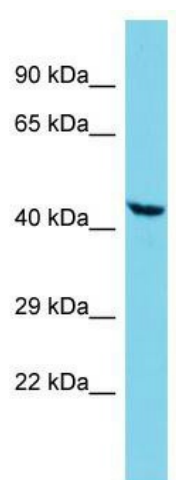
Product data:

Product Type:	Primary Antibodies
Applications:	WB
Recommended Dilution:	WB
Reactivity:	Human
Host:	Rabbit
Isotype:	IgG
Clonality:	Polyclonal
Immunogen:	The immunogen for Anti-ATAD3C Antibody is: synthetic peptide directed towards the N-terminal region of Human ATAD3C. Synthetic peptide located within the following region: QMQEQLQLEQQSKLQLVNEDLRKQEESVQKHHQTFLESIRAAGTLFGE
Formulation:	Liquid. Purified antibody supplied in 1x PBS buffer with 0.09% (w/v) sodium azide and 2% sucrose. <i>Note that this product is shipped as lyophilized powder to China customers.</i>
Conjugation:	Unconjugated
Storage:	Store at -20°C as received.
Stability:	Stable for 12 months from date of receipt.
Predicted Protein Size:	46 kDa
Gene Name:	ATPase family, AAA domain containing 3C
Database Link:	NP_001034300 Entrez Gene 219293 Human Q5T2N8
Background:	The function of this protein remains unknown.
Synonyms:	FLJ34599; FLJ37183
Note:	Immunogen sequence homology: Human: 100%; Dog: 85%; Pig: 85%; Rat: 85%; Mouse: 85%; Bovine: 85%; Zebrafish: 85%; Guinea pig: 85%; Horse: 75%; Rabbit: 75%



[View online »](#)

Product images:



Host: Rabbit; Target Name: ATAD3C; Sample
Tissue: A549 Whole Cell lysates; Antibody
Dilution: 1.0ug/ml