

Product datasheet for TA332237

Polyserase3 (PRSS53) Rabbit Polyclonal Antibody

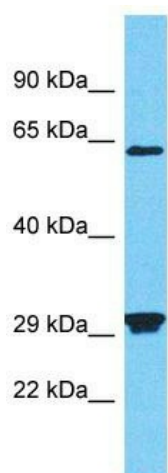
Product data:

Product Type:	Primary Antibodies
Applications:	WB
Recommended Dilution:	WB
Reactivity:	Human
Host:	Rabbit
Isotype:	IgG
Clonality:	Polyclonal
Immunogen:	The immunogen for Anti-PRSS53 Antibody is: synthetic peptide directed towards the N-terminal region of Human PRSS53. Synthetic peptide located within the following region: GATVLM EGLQAAQRACGQRGPGPPKPQEGNTVPGWQASVRRRQGAHIC
Formulation:	Liquid. Purified antibody supplied in 1x PBS buffer with 0.09% (w/v) sodium azide and 2% sucrose. <i>Note that this product is shipped as lyophilized powder to China customers.</i>
Conjugation:	Unconjugated
Storage:	Store at -20°C as received.
Stability:	Stable for 12 months from date of receipt.
Predicted Protein Size:	55 kDa
Gene Name:	protease, serine 53
Database Link:	NP_001034592 Entrez Gene 339105 Human Q2L4Q9
Background:	PRSS53 in vitro can degrade the fibrinogen alpha chain of as well as pro-urokinase-type plasminogen activator.
Synonyms:	POL3S; UNQ308
Note:	Immunogen sequence homology: Human: 100%; Pig: 93%; Rat: 93%; Horse: 93%; Mouse: 93%; Bovine: 93%; Dog: 92%; Rabbit: 79%



[View online »](#)

Product images:



Host: Rabbit

Target Name: PRSS53

Sample Tissue: Hela Cell Lysate

Antibody Dilution: 1.0 μ g/ml

Host: Rabbit; Target Name: PRSS53; Sample Tissue: Hela Whole Cell lysates; Antibody Dilution: 1.0 μ g/ml