

## Product datasheet for **TA332236**

### SAPCD1 Rabbit Polyclonal Antibody

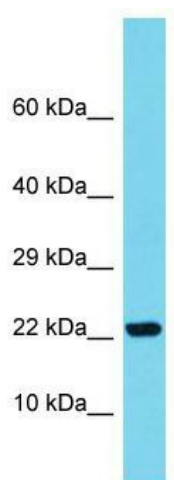
#### Product data:

Product Type:	Primary Antibodies
Applications:	WB
Recommended Dilution:	WB
Reactivity:	Human
Host:	Rabbit
Isotype:	IgG
Clonality:	Polyclonal
Immunogen:	The immunogen for Anti-SAPCD1 Antibody is: synthetic peptide directed towards the C-terminal region of Human SAPCD1. Synthetic peptide located within the following region: NLIHEKFSPSPLNKASSCTTQDSKERREQLNWQQQELSRQKGVTPKE
Formulation:	Liquid. Purified antibody supplied in 1x PBS buffer with 0.09% (w/v) sodium azide and 2% sucrose. <i>Note that this product is shipped as lyophilized powder to China customers.</i>
Conjugation:	Unconjugated
Storage:	Store at -20°C as received.
Stability:	Stable for 12 months from date of receipt.
Predicted Protein Size:	20 kDa
Gene Name:	suppressor APC domain containing 1
Database Link:	<a href="#">NP_001034740</a> <a href="#">Entrez Gene 401251 Human</a> <a href="#">Q5SSQ6</a>
Background:	The function of this protein remains unknown.
Synonyms:	C6orf26; NG23
Note:	Immunogen sequence homology: Human: 100%; Bovine: 86%



[View online »](#)

## Product images:



Host: Rabbit; Target Name: SAPCD1; Sample  
Tissue: Fetal Kidney lysates; Antibody Dilution:  
1.0ug/ml