

## Product datasheet for **TA332235**

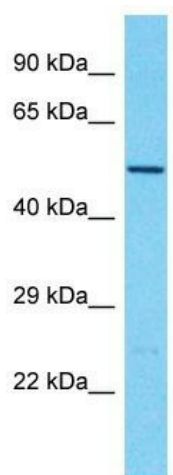
### **TBC1D3G Rabbit Polyclonal Antibody**

#### **Product data:**

Product Type:	Primary Antibodies
Applications:	WB
Recommended Dilution:	WB
Reactivity:	Human
Host:	Rabbit
Isotype:	IgG
Clonality:	Polyclonal
Immunogen:	The immunogen for Anti-TBC1D3G Antibody is: synthetic peptide directed towards the middle region of Human TBC1D3G. Synthetic peptide located within the following region: HVVATSQPKTMGHQDKKDLGQCSPGLGCLIRILIDGISLGLTLRLWDVYL
Formulation:	Liquid. Purified antibody supplied in 1x PBS buffer with 0.09% (w/v) sodium azide and 2% sucrose. <i>Note that this product is shipped as lyophilized powder to China customers.</i>
Conjugation:	Unconjugated
Storage:	Store at -20°C as received.
Stability:	Stable for 12 months from date of receipt.
Predicted Protein Size:	51 kDa
Database Link:	<a href="#">NP_001035372</a> <a href="#">Entrez Gene 654341</a>
Background:	The function of this protein remains unknown.
Synonyms:	member 3G; TBC1 domain family
Note:	Immunogen sequence homology: Human: 100%



[View online »](#)

**Product images:**

Host: Rabbit  
Target Name: TBC1D3G  
Sample Tissue: MCF7 Cell Lysate  
Antibody Dilution: 1.0µg/ml

Host: Rabbit; Target Name: TBC1D3G; Sample  
Tissue: MCF7 Whole Cell lysates; Antibody  
Dilution: 1.0ug/ml