

Product datasheet for **TA332234**

YARS2 Rabbit Polyclonal Antibody

Product data:

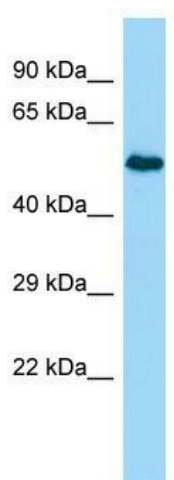
Product Type:	Primary Antibodies
Applications:	WB
Recommended Dilution:	WB
Reactivity:	Human
Host:	Rabbit
Isotype:	IgG
Clonality:	Polyclonal
Immunogen:	The immunogen for Anti-YARS2 Antibody is: synthetic peptide directed towards the C-terminal region of Human YARS2. Synthetic peptide located within the following region: QPDDSVERYLKLFTFLPLPEIDHIMQLHVKEPERRGPQKRLAAEVTCLVH
Formulation:	Liquid. Purified antibody supplied in 1x PBS buffer with 0.09% (w/v) sodium azide and 2% sucrose. <i>Note that this product is shipped as lyophilized powder to China customers.</i>
Conjugation:	Unconjugated
Storage:	Store at -20°C as received.
Stability:	Stable for 12 months from date of receipt.
Predicted Protein Size:	52 kDa
Gene Name:	tyrosyl-tRNA synthetase 2
Database Link:	NP_001035526 Entrez Gene 51067 Human Q9Y2Z4
Background:	This gene encodes a mitochondrial protein that catalyzes the attachment of tyrosine to tRNA(Tyr). Mutations in this gene are associated with myopathy with lactic acidosis and sideroblastic anemia type 2 (MLASA2).
Synonyms:	CGI-04; MLASA2; MT-TYRRS; TYRRS
Note:	Immunogen sequence homology: Human: 100%; Pig: 93%; Bovine: 93%; Dog: 86%; Rat: 86%; Guinea pig: 86%; Horse: 85%; Mouse: 79%; Rabbit: 79%
Protein Families:	Druggable Genome



[View online »](#)

Protein Pathways: Aminoacyl-tRNA biosynthesis

Product images:



Host: Rabbit; Target Name: YARS2; Sample Tissue: MCF7 Whole Cell lysates; Antibody Dilution: 1.0ug/ml