

## Product datasheet for TA332233

### EFTUD1 (EFL1) Rabbit Polyclonal Antibody

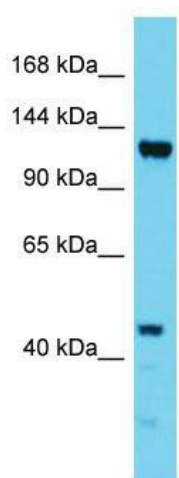
#### Product data:

Product Type:	Primary Antibodies
Applications:	WB
Recommended Dilution:	WB
Reactivity:	Human
Host:	Rabbit
Isotype:	IgG
Clonality:	Polyclonal
Immunogen:	The immunogen for Anti-EFTUD1 Antibody is: synthetic peptide directed towards the N-terminal region of Human EFTUD1. Synthetic peptide located within the following region: KVL EERAERETESQVNPNSEQGEQVYDWSTGLEDTDDSHLYFSPEQGNV
Formulation:	Liquid. Purified antibody supplied in 1x PBS buffer with 0.09% (w/v) sodium azide and 2% sucrose.
Conjugation:	Unconjugated
Storage:	Store at -20°C as received.
Stability:	Stable for 12 months from date of receipt.
Predicted Protein Size:	117 kDa
Gene Name:	elongation factor like GTPase 1
Database Link:	<a href="#">NP_001035700</a> <a href="#">Entrez Gene 79631 Human</a> <a href="#">Q7Z2Z2</a>
Background:	EFTUD1 is involved in the biogenesis of the 60S ribosomal subunit and translational activation of ribosomes. Together with SBDS, EFTUD1 triggers the GTP-dependent release of EIF6 from 60S pre-ribosomes in the cytoplasm, thereby activating ribosomes for translation competence by allowing 80S ribosome assembly and facilitating EIF6 recycling to the nucleus, where it is required for 60S rRNA processing and nuclear export. EFTUD1 has low intrinsic GTPase activity. GTPase activity is increased by contact with 60S ribosome subunits.
Synonyms:	EFTUD1; FAM42A; HsT19294; RIA1


[View online »](#)

**Note:** Immunogen sequence homology: Dog: 100%; Pig: 100%; Rat: 100%; Human: 100%; Mouse: 100%; Rabbit: 100%; Guinea pig: 100%; Bovine: 93%; Horse: 79%

### Product images:



Host: Rabbit; Target Name: EFTUD1; Sample  
Tissue: HepG2 Whole Cell lysates; Antibody  
Dilution: 1.0ug/ml