

Product datasheet for **TA332229**

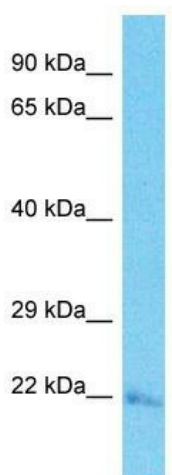
TATDN3 Rabbit Polyclonal Antibody

Product data:

Product Type:	Primary Antibodies
Applications:	WB
Recommended Dilution:	WB
Reactivity:	Human
Host:	Rabbit
Isotype:	IgG
Clonality:	Polyclonal
Immunogen:	The immunogen for Anti-TATDN3 Antibody is: synthetic peptide directed towards the C-terminal region of Human TATDN3. Synthetic peptide located within the following region: FSIPPSIIRSGQLLSLFSKKQKLVKQLPLTSICLETDSPALGPEKQQNIL
Formulation:	Liquid. Purified antibody supplied in 1x PBS buffer with 0.09% (w/v) sodium azide and 2% sucrose. <i>Note that this product is shipped as lyophilized powder to China customers.</i>
Conjugation:	Unconjugated
Storage:	Store at -20°C as received.
Stability:	Stable for 12 months from date of receipt.
Predicted Protein Size:	26 kDa
Gene Name:	TatD DNase domain containing 3
Database Link:	NP_001036017 Entrez Gene 128387 Human Q17R31
Background:	TATDN3 is a putative deoxyribonuclease.
Synonyms:	MGC142198
Note:	Immunogen sequence homology: Pig: 100%; Rat: 100%; Human: 100%; Mouse: 100%; Bovine: 100%; Zebrafish: 100%; Guinea pig: 100%; Rabbit: 92%



[View online »](#)

Product images:


Host: Rabbit

Target Name: TATDN3

Sample Tissue: ACHN Cell Lysate

Antibody Dilution: 1.0µg/ml

Host: Rabbit; Target Name: TATDN3; Sample
Tissue: ACHN Whole Cell lysates; Antibody
Dilution: 1.0ug/ml