

## Product datasheet for **TA332228**

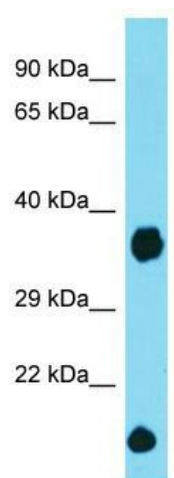
### Dcun1d2 Rabbit Polyclonal Antibody

#### Product data:

Product Type:	Primary Antibodies
Applications:	WB
Recommended Dilution:	WB
Reactivity:	Mouse
Host:	Rabbit
Isotype:	IgG
Clonality:	Polyclonal
Immunogen:	The immunogen for Anti-Dcun1d2 Antibody is: synthetic peptide directed towards the N-terminal region of Mouse Dcun1d2. Synthetic peptide located within the following region: MHKLKSAQKDKVRQFMACTQASERTAIYCLTQNEWKLDEATDSFFQNPEA
Formulation:	Liquid. Purified antibody supplied in 1x PBS buffer with 0.09% (w/v) sodium azide and 2% sucrose. <i>Note that this product is shipped as lyophilized powder to China customers.</i>
Conjugation:	Unconjugated
Storage:	Store at -20°C as received.
Stability:	Stable for 12 months from date of receipt.
Predicted Protein Size:	21 kDa
Gene Name:	DCN1, defective in cullin neddylation 1, domain containing 2 ( <i>S. cerevisiae</i> )
Database Link:	<a href="#">NP_001036114</a> <a href="#">Entrez Gene 102323 Mouse</a> <a href="#">Q8BZJ7</a>
Background:	The function of this protein remains unknown.
Synonyms:	C13orf17; DCUN1L2; FLJ10704; FLJ20092
Note:	Immunogen sequence homology: Dog: 100%; Pig: 100%; Rat: 100%; Horse: 100%; Human: 100%; Mouse: 100%; Bovine: 100%; Rabbit: 100%; Zebrafish: 100%; Guinea pig: 100%



[View online »](#)

**Product images:**

Host: Rabbit; Target Name: Dcun1d2; Sample  
Tissue: Mouse Heart lysates; Antibody Dilution:  
1.0ug/ml