

## Product datasheet for **TA332227**

### Gdpd1 Rabbit Polyclonal Antibody

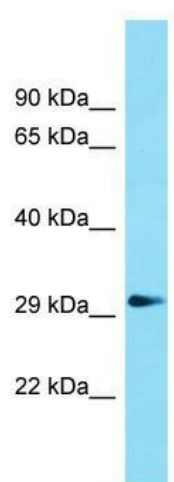
#### Product data:

Product Type:	Primary Antibodies
Applications:	WB
Recommended Dilution:	WB
Reactivity:	Rat
Host:	Rabbit
Isotype:	IgG
Clonality:	Polyclonal
Immunogen:	The immunogen for Anti-Gdpd1 Antibody is: synthetic peptide directed towards the N-terminal region of Rat Gdpd1. Synthetic peptide located within the following region: MSSTAAFCLLSTLGGYLVTSFLLKYPALLHQRKKQRFLSRHISHRGGAG
Formulation:	Liquid. Purified antibody supplied in 1x PBS buffer with 0.09% (w/v) sodium azide and 2% sucrose.
Conjugation:	Unconjugated
Storage:	Store at -20°C as received.
Stability:	Stable for 12 months from date of receipt.
Predicted Protein Size:	34 kDa
Gene Name:	glycerophosphodiester phosphodiesterase domain containing 1
Database Link:	<a href="#">NP_001037703</a> <a href="#">Entrez Gene 303407 Rat</a> <a href="#">Q0VGK4</a>
Background:	The function of this protein remains unknown.
Synonyms:	FLJ27503; FLJ37451; GDE4; MGC35046
Note:	Immunogen sequence homology: Pig: 100%; Horse: 100%; Human: 100%; Bovine: 100%; Rabbit: 100%; Dog: 93%; Rat: 93%; Mouse: 93%; Guinea pig: 93%



[View online »](#)

## Product images:



Host: Rabbit; Target Name: Gdpd1; Sample  
Tissue: Rat Muscle lysates; Antibody Dilution:  
1.0ug/ml