

Product datasheet for **TA332225**

C17orf108 (LYRM9) Rabbit Polyclonal Antibody

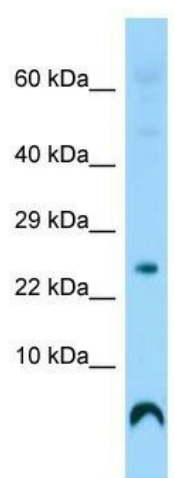
Product data:

Product Type:	Primary Antibodies
Applications:	WB
Recommended Dilution:	WB
Reactivity:	Human
Host:	Rabbit
Isotype:	IgG
Clonality:	Polyclonal
Immunogen:	The immunogen for Anti-C17orf108 Antibody is: synthetic peptide directed towards the middle region of Human C17orf108. Synthetic peptide located within the following region: TKGIQQHYKHAVRQSFRVHSDNPERIQQIIKRAIEDADWIMNKYKKQN
Formulation:	Liquid. Purified antibody supplied in 1x PBS buffer with 0.09% (w/v) sodium azide and 2% sucrose.
Conjugation:	Unconjugated
Storage:	Store at -20°C as received.
Stability:	Stable for 12 months from date of receipt.
Predicted Protein Size:	8 kDa
Gene Name:	LYR motif containing 9
Database Link:	NP_001070148 Entrez Gene 201229 Human A8MSI8
Background:	The function of this protein remains unknown.
Synonyms:	C17orf108; HSD24
Note:	Immunogen sequence homology: Dog: 100%; Rat: 100%; Horse: 100%; Human: 100%; Mouse: 100%; Rabbit: 100%; Bovine: 93%; Pig: 85%; Guinea pig: 85%; Zebrafish: 82%



[View online »](#)

Product images:



Host: Rabbit; Target Name: C17orf108; Sample
Tissue: Fetal Heart lysates; Antibody Dilution:
1.0ug/ml