

Product datasheet for **TA332224**

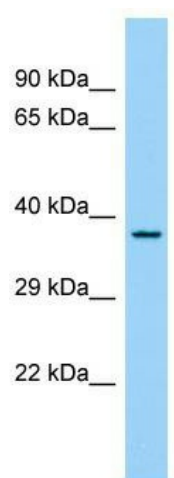
FAM110C Rabbit Polyclonal Antibody

Product data:

Product Type:	Primary Antibodies
Applications:	WB
Recommended Dilution:	WB
Reactivity:	Human
Host:	Rabbit
Isotype:	IgG
Clonality:	Polyclonal
Immunogen:	The immunogen for Anti-FAM110C Antibody is: synthetic peptide directed towards the N-terminal region of Human FAM110C. Synthetic peptide located within the following region: DSLIYRQKCEFVRGSGADGPRASLVKKLFQGPDKAPVPRTGDEGKAG
Formulation:	Liquid. Purified antibody supplied in 1x PBS buffer with 0.09% (w/v) sodium azide and 2% sucrose. <i>Note that this product is shipped as lyophilized powder to China customers.</i>
Conjugation:	Unconjugated
Storage:	Store at -20°C as received.
Stability:	Stable for 12 months from date of receipt.
Predicted Protein Size:	35 kDa
Gene Name:	family with sequence similarity 110 member C
Database Link:	NP_001071178 Entrez Gene 642273 Human Q1W6H9
Background:	FAM110C may play a role in microtubule organization.
Synonyms:	Fam110c
Note:	Immunogen sequence homology: Human: 100%



[View online »](#)

Product images:

Host: Rabbit; Target Name: FAM110C; Sample
Tissue: Fetal Liver lysates; Antibody Dilution:
1.0ug/ml