

## Product datasheet for **TA332223**

### **KAT3A / CBP (CREBBP) Rabbit Polyclonal Antibody**

#### **Product data:**

<b>Product Type:</b>	Primary Antibodies
<b>Applications:</b>	IHC, WB
<b>Recommended Dilution:</b>	WB, IHC
<b>Reactivity:</b>	Human
<b>Host:</b>	Rabbit
<b>Isotype:</b>	IgG
<b>Clonality:</b>	Polyclonal
<b>Immunogen:</b>	The immunogen for Anti-CREBBP Antibody: synthetic peptide directed towards the N terminal of human CREBBP. Synthetic peptide located within the following region: TPAASQALNPQAQKQVGLATSSPATSQTGPGICMNANFNQTHPGLLSNS
<b>Formulation:</b>	Liquid. Purified antibody supplied in 1x PBS buffer with 0.09% (w/v) sodium azide and 2% sucrose. <i>Note that this product is shipped as lyophilized powder to China customers.</i>
<b>Conjugation:</b>	Unconjugated
<b>Storage:</b>	Store at -20°C as received.
<b>Stability:</b>	Stable for 12 months from date of receipt.
<b>Predicted Protein Size:</b>	261 kDa
<b>Gene Name:</b>	CREB binding protein
<b>Database Link:</b>	<a href="#">NP_001073315</a> <a href="#">Entrez Gene 1387 Human</a> <a href="#">Q92793</a>



[View online »](#)

**Background:** CREBBP is involved in the transcriptional coactivation of many different transcription factors. First isolated as a nuclear protein that binds to cAMP-response element binding protein (CREB), this gene is now known to play critical roles in embryonic development, growth control, and homeostasis by coupling chromatin remodeling to transcription factor recognition. CREBBP has intrinsic histone acetyltransferase activity and also acts as a scaffold to stabilize additional protein interactions with the transcription complex. This protein acetylates both histone and non-histone proteins. This protein shares regions of very high sequence similarity with protein p300 in its bromodomain, cysteine-histidine-rich regions, and histone acetyltransferase domain.

**Synonyms:** CBP; KAT3A; RSTS

**Note:** Immunogen sequence homology: Dog: 100%; Pig: 100%; Rat: 100%; Horse: 100%; Human: 100%; Mouse: 100%; Bovine: 100%; Rabbit: 100%; Guinea pig: 100%

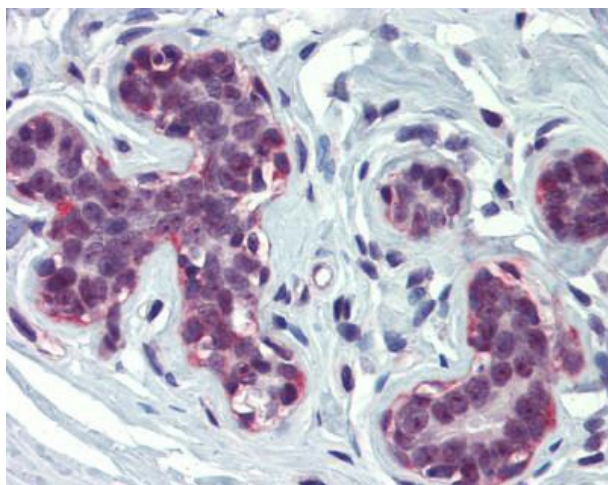
**Protein Families:** Druggable Genome

**Protein Pathways:** Adherens junction, Cell cycle, Huntington's disease, Jak-STAT signaling pathway, Long-term potentiation, Melanogenesis, Notch signaling pathway, Pathways in cancer, Prostate cancer, Renal cell carcinoma, TGF-beta signaling pathway, Wnt signaling pathway

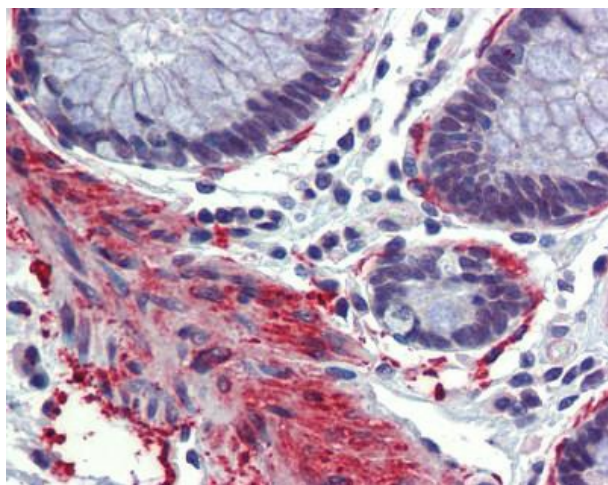
### Product images:



WB Suggested Anti-CREBBP Antibody Titration: 1 ug/ml; Positive Control: Jurkat cell lysate



Anti-CREBBP antibody IHC staining of human breast. Immunohistochemistry of formalin-fixed, paraffin-embedded tissue after heat-induced antigen retrieval. Antibody concentration 5 ug/ml.



Rabbit Anti-CREBBP Antibody; Paraffin Embedded Tissue: Human Colon; Antibody Concentration: 5 ug/ml