

Product datasheet for **TA332221**

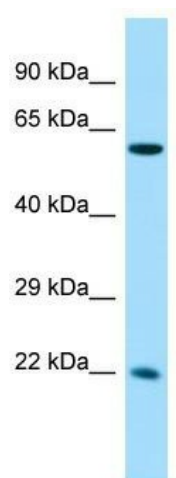
CCDC85A Rabbit Polyclonal Antibody

Product data:

Product Type:	Primary Antibodies
Applications:	WB
Recommended Dilution:	WB
Reactivity:	Human
Host:	Rabbit
Isotype:	IgG
Clonality:	Polyclonal
Immunogen:	The immunogen for Anti-CCDC85A Antibody is: synthetic peptide directed towards the N-terminal region of Human CCDC85A. Synthetic peptide located within the following region: AMLDHSNLIREVNRRLQLHLGEIRGLKDINQKLQEDNQELRDLCFLDDD
Formulation:	Liquid. Purified antibody supplied in 1x PBS buffer with 0.09% (w/v) sodium azide and 2% sucrose.
Conjugation:	Unconjugated
Storage:	Store at -20°C as received.
Stability:	Stable for 12 months from date of receipt.
Predicted Protein Size:	60 kDa
Gene Name:	coiled-coil domain containing 85A
Database Link:	NP_001073902 Entrez Gene 114800 Human Q96PX6
Background:	The function of this protein remains unknown.
Synonyms:	KIAA1912
Note:	Immunogen sequence homology: Pig: 100%; Rat: 100%; Horse: 100%; Human: 100%; Mouse: 100%; Bovine: 100%; Rabbit: 100%; Guinea pig: 100%; Zebrafish: 93%



[View online »](#)

Product images:

Host: Rabbit; Target Name: CCDC85A; Sample
Tissue: Fetal Liver lysates; Antibody Dilution:
1.0ug/ml