

## Product datasheet for **TA332220**

### SLC38A8 Rabbit Polyclonal Antibody

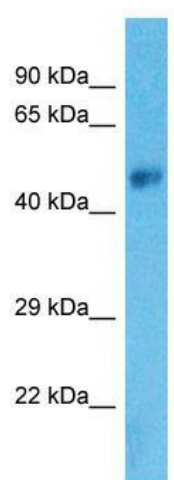
#### Product data:

Product Type:	Primary Antibodies
Applications:	WB
Recommended Dilution:	WB
Reactivity:	Human
Host:	Rabbit
Isotype:	IgG
Clonality:	Polyclonal
Immunogen:	The immunogen for Anti-SLC38A8 Antibody is: synthetic peptide directed towards the C-terminal region of Human SLC38A8. Synthetic peptide located within the following region: VSVLSLLACCLIIYSLTGVYGFITFGTEVSADVLMSYPGNDMVIIVARVLF
Formulation:	Liquid. Purified antibody supplied in 1x PBS buffer with 0.09% (w/v) sodium azide and 2% sucrose.
Conjugation:	Unconjugated
Storage:	Store at -20°C as received.
Stability:	Stable for 12 months from date of receipt.
Predicted Protein Size:	47 kDa
Gene Name:	solute carrier family 38 member 8
Database Link:	<a href="#">NP_001073911</a> <a href="#">Entrez Gene 146167 Human</a> <a href="#">A6NNN8</a>
Background:	SLC38A8 is a putative sodium-dependent amino acid/proton antiporter.
Synonyms:	FVH2
Note:	Immunogen sequence homology: Human: 100%; Dog: 93%; Rat: 93%; Horse: 93%; Pig: 86%; Mouse: 86%; Bovine: 86%; Rabbit: 86%; Guinea pig: 86%
Protein Families:	Transmembrane



[View online »](#)

## Product images:



Host: Rabbit; Target Name: SLC38A8; Sample  
Tissue: Fetal Brain lysates; Antibody Dilution:  
1.0ug/ml