

## Product datasheet for **TA332219**

### INTS1 Rabbit Polyclonal Antibody

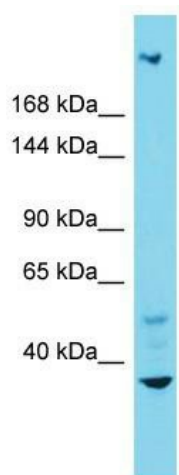
#### Product data:

Product Type:	Primary Antibodies
Applications:	WB
Recommended Dilution:	WB
Reactivity:	Human
Host:	Rabbit
Isotype:	IgG
Clonality:	Polyclonal
Immunogen:	The immunogen for Anti-INTS1 Antibody is: synthetic peptide directed towards the N-terminal region of Human INTS1. Synthetic peptide located within the following region: TVRRPSAAAKPSGHPPPGDFIALGSKGQANESKTASTLLKPAPSGLPSEK
Formulation:	Liquid. Purified antibody supplied in 1x PBS buffer with 0.09% (w/v) sodium azide and 2% sucrose.
Conjugation:	Unconjugated
Storage:	Store at -20°C as received.
Stability:	Stable for 12 months from date of receipt.
Predicted Protein Size:	240 kDa
Gene Name:	integrator complex subunit 1
Database Link:	<a href="#">NP_001073922</a> <a href="#">Entrez Gene 26173 Human</a> <a href="#">Q8N201</a>
Background:	INTS1 is a subunit of the Integrator complex, which associates with the C-terminal domain of RNA polymerase II large subunit and mediates 3-prime end processing of small nuclear RNAs U1 and U2 .
Synonyms:	INT1; NET28
Note:	Immunogen sequence homology: Dog: 100%; Pig: 100%; Rat: 100%; Human: 100%; Guinea pig: 100%; Horse: 86%; Mouse: 86%; Bovine: 86%



[View online »](#)

Product images:



Host: Rabbit; Target Name: INTS1; Sample Tissue: Fetal Liver lysates; Antibody Dilution: 1.0ug/ml