

Product datasheet for **TA332216**

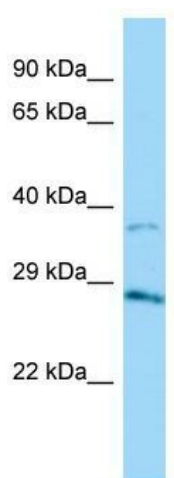
AKR1B15 Rabbit Polyclonal Antibody

Product data:

Product Type:	Primary Antibodies
Applications:	WB
Recommended Dilution:	WB
Reactivity:	Human
Host:	Rabbit
Isotype:	IgG
Clonality:	Polyclonal
Immunogen:	The immunogen for Anti-AKR1B15 Antibody is: synthetic peptide directed towards the C-terminal region of Human AKR1B15. Synthetic peptide located within the following region: TAYSPLGSPDRPWAKPEDPSLLEDPKIKEIAAKHKTTAQVLRFIQRN
Formulation:	Liquid. Purified antibody supplied in 1x PBS buffer with 0.09% (w/v) sodium azide and 2% sucrose.
Conjugation:	Unconjugated
Storage:	Store at -20°C as received.
Stability:	Stable for 12 months from date of receipt.
Predicted Protein Size:	36 kDa
Gene Name:	aldo-keto reductase family 1, member B15
Database Link:	NP_001074007 Entrez Gene 441282 Human C9JRZ8
Background:	AKR1B15 possesses weak oxidoreductase activity.
Synonyms:	AK1R1B7; AKR1B10L; AKR1R1B7
Note:	Immunogen sequence homology: Rat: 100%; Human: 100%; Pig: 93%; Mouse: 93%; Guinea pig: 93%; Bovine: 92%; Dog: 86%; Rabbit: 86%; Zebrafish: 86%; Yeast: 79%



[View online »](#)

Product images:

Host: Rabbit; Target Name: AKR1B15; Sample
Tissue: HT1080 Whole Cell lysates; Antibody
Dilution: 1.0ug/ml