

## Product datasheet for **TA332214**

### LILRB5 Rabbit Polyclonal Antibody

#### Product data:

Product Type:	Primary Antibodies
Applications:	WB
Recommended Dilution:	WB
Reactivity:	Human
Host:	Rabbit
Isotype:	IgG
Clonality:	Polyclonal
Immunogen:	The immunogen for Anti-LILRB5 Antibody is: synthetic peptide directed towards the C-terminal region of Human LILRB5. Synthetic peptide located within the following region: RPAGAAGPEPKDQGLQKRASPVADIQEEILNAAVKDTQPKDGVEMDARAA
Formulation:	Liquid. Purified antibody supplied in 1x PBS buffer with 0.09% (w/v) sodium azide and 2% sucrose. <i>Note that this product is shipped as lyophilized powder to China customers.</i>
Conjugation:	Unconjugated
Storage:	Store at -20°C as received.
Stability:	Stable for 12 months from date of receipt.
Predicted Protein Size:	53 kDa
Gene Name:	leukocyte immunoglobulin like receptor B5
Database Link:	<a href="#">NP_001074911</a> <a href="#">Entrez Gene 10990 Human O75023</a>
Background:	This gene is a member of the leukocyte immunoglobulin-like receptor (LIR) family, which is found in a gene cluster at chromosomal region 19q13.4. The encoded protein belongs to the subfamily B class of LIR receptors which contain two or four extracellular immunoglobulin domains, a transmembrane domain, and two to four cytoplasmic immunoreceptor tyrosine-based inhibitory motifs (ITIMs). Several other LIR subfamily B receptors are expressed on immune cells where they bind to MHC class I molecules on antigen-presenting cells and inhibit stimulation of an immune response. Multiple transcript variants encoding different isoforms have been found for this gene.



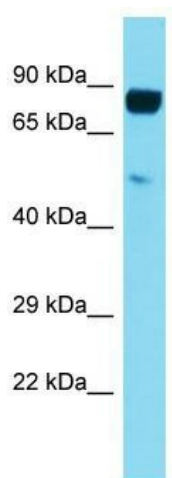
[View online »](#)

**Synonyms:** CD85C; LIR-8; LIR8

**Note:** Immunogen sequence homology: Human: 100%; Horse: 77%

**Protein Families:** Transmembrane

### Product images:



Host: Rabbit; Target Name: LILRB5; Sample Tissue: Jurkat Whole Cell lysates; Antibody Dilution: 1.0ug/ml