

## Product datasheet for **TA332212**

### PLSCR5 Rabbit Polyclonal Antibody

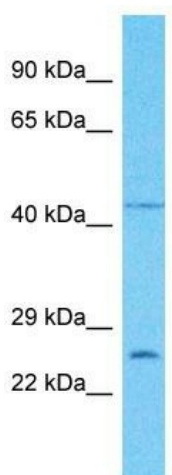
#### Product data:

Product Type:	Primary Antibodies
Applications:	WB
Recommended Dilution:	WB
Reactivity:	Human
Host:	Rabbit
Isotype:	IgG
Clonality:	Polyclonal
Immunogen:	The immunogen for Anti-PLSCR5 Antibody is: synthetic peptide directed towards the C-terminal region of Human PLSCR5. Synthetic peptide located within the following region: SCWCPCYLQELEIQAPPGTIVGYVTQKWDPFLPKFTIQNANKEDILKIVG
Formulation:	Liquid. Purified antibody supplied in 1x PBS buffer with 0.09% (w/v) sodium azide and 2% sucrose.
Conjugation:	Unconjugated
Storage:	Store at -20°C as received.
Stability:	Stable for 12 months from date of receipt.
Predicted Protein Size:	30 kDa
Gene Name:	phospholipid scramblase family member 5
Database Link:	<a href="#">NP_001078889</a> <a href="#">Entrez Gene 389158 Human</a> <a href="#">A0PG75</a>
Background:	The function of this protein remains unknown.
Synonyms:	331000
Note:	Immunogen sequence homology: Dog: 100%; Pig: 100%; Rat: 100%; Horse: 100%; Human: 100%; Guinea pig: 100%; Mouse: 93%; Rabbit: 93%



[View online »](#)

## Product images:



Host: Rabbit  
 Target Name: PLSCR5  
 Sample Tissue: HCT15 Cell Lysate  
 Antibody Dilution: 1.0µg/ml

Host: Rabbit; Target Name: PLSCR5; Sample  
 Tissue: HCT15 Whole Cell lysates; Antibody  
 Dilution: 1.0ug/ml