

Product datasheet for **TA332211**

PRAMEF15 Rabbit Polyclonal Antibody

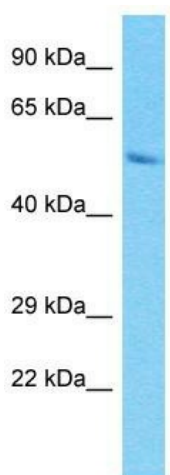
Product data:

Product Type:	Primary Antibodies
Applications:	WB
Recommended Dilution:	WB
Reactivity:	Human
Host:	Rabbit
Isotype:	IgG
Clonality:	Polyclonal
Immunogen:	The immunogen for Anti-PRAMEF15 Antibody is: synthetic peptide directed towards the C-terminal region of Human PRAMEF15. Synthetic peptide located within the following region: SHMDVSRVVSPEQKKEIVTQFTTQFLKLRCLQKLYMNSVSFLEGHLDQLL
Formulation:	Liquid. Purified antibody supplied in 1x PBS buffer with 0.09% (w/v) sodium azide and 2% sucrose. <i>Note that this product is shipped as lyophilized powder to China customers.</i>
Conjugation:	Unconjugated
Storage:	Store at -20°C as received.
Stability:	Stable for 12 months from date of receipt.
Predicted Protein Size:	55 kDa
Gene Name:	PRAME family member 15
Database Link:	NP_001091846 Entrez Gene 653619 Human Q5VWM5
Background:	The function of this protein remains unknown.
Synonyms:	PRAMEF9
Note:	Immunogen sequence homology: Human: 100%



[View online »](#)

Product images:



Host: Rabbit
Target Name: PRAMEF15
Sample Tissue: HepG2 Cell Lysate
Antibody Dilution: 1.0 μ g/ml

Host: Rabbit; Target Name: PRAMEF15; Sample
Tissue: HepG2 Whole Cell lysates; Antibody
Dilution: 1.0ug/ml