

Product datasheet for **TA332210**

RNF169 Rabbit Polyclonal Antibody

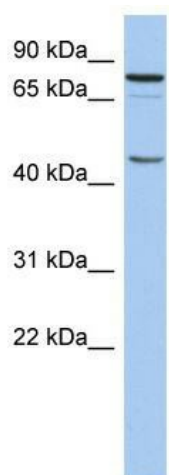
Product data:

Product Type:	Primary Antibodies
Applications:	WB
Recommended Dilution:	WB
Reactivity:	Human
Host:	Rabbit
Isotype:	IgG
Clonality:	Polyclonal
Immunogen:	The immunogen for Anti-RNF169 Antibody: synthetic peptide directed towards the N terminal of human RNF169. Synthetic peptide located within the following region: DTETGKRKMDEQKRDEPLVLKTNLERCPARLSDSENEEPSRGQMTQTHR
Formulation:	Liquid. Purified antibody supplied in 1x PBS buffer with 0.09% (w/v) sodium azide and 2% sucrose.
Conjugation:	Unconjugated
Storage:	Store at -20°C as received.
Stability:	Stable for 12 months from date of receipt.
Predicted Protein Size:	77 kDa
Gene Name:	ring finger protein 169
Database Link:	NP_001092108 Entrez Gene 254225 Human Q8NCN4
Background:	The exact functions of RNF169 remain unknown.
Synonyms:	KIAA1991
Note:	Immunogen sequence homology: Dog: 100%; Pig: 100%; Rat: 100%; Horse: 100%; Human: 100%; Mouse: 100%; Bovine: 100%; Guinea pig: 100%; Rabbit: 93%



[View online »](#)

Product images:



WB Suggested Anti-RNF169 Antibody Titration:
0.2-1 ug/ml; ELISA Titer: 1: 312500; Positive
Control: THP-1 cell lysate