

## Product datasheet for TA332209

### PTAR1 Rabbit Polyclonal Antibody

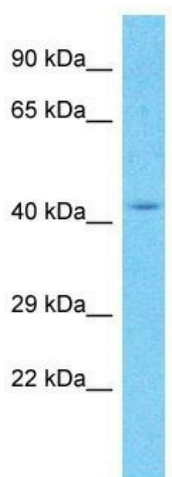
#### Product data:

Product Type:	Primary Antibodies
Applications:	WB
Recommended Dilution:	WB
Reactivity:	Human
Host:	Rabbit
Isotype:	IgG
Clonality:	Polyclonal
Immunogen:	The immunogen for Anti-PTAR1 Antibody is: synthetic peptide directed towards the C-terminal region of Human PTAR1. Synthetic peptide located within the following region: LISQTVIDSSVMEQNPLRSEPALVPPKDEEAAVSTEEPRLNPLHLLLEEV
Formulation:	Liquid. Purified antibody supplied in 1x PBS buffer with 0.09% (w/v) sodium azide and 2% sucrose. <i>Note that this product is shipped as lyophilized powder to China customers.</i>
Conjugation:	Unconjugated
Storage:	Store at -20°C as received.
Stability:	Stable for 12 months from date of receipt.
Predicted Protein Size:	46 kDa
Gene Name:	protein prenyltransferase alpha subunit repeat containing 1
Database Link:	<a href="#">NP_001093136</a> <a href="#">Entrez Gene 375743 Human</a> <a href="#">Q7Z6K3</a>
Background:	The function of this protein remains unknown.
Synonyms:	FLJ45604
Note:	Immunogen sequence homology: Human: 100%; Horse: 92%; Rat: 83%; Mouse: 83%; Rabbit: 83%; Dog: 79%
Protein Families:	Druggable Genome



[View online »](#)

## Product images:



Host: Rabbit

Target Name: PTAR1

Sample Tissue: HepG2 Cell Lysate

Antibody Dilution: 1.0µg/ml

Host: Rabbit; Target Name: PTAR1; Sample  
Tissue: HepG2 Whole Cell lysates; Antibody  
Dilution: 1.0ug/ml