

## Product datasheet for **TA332205**

### C7orf57 Rabbit Polyclonal Antibody

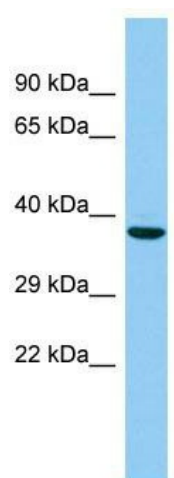
#### Product data:

Product Type:	Primary Antibodies
Applications:	WB
Recommended Dilution:	WB
Reactivity:	Human
Host:	Rabbit
Isotype:	IgG
Clonality:	Polyclonal
Immunogen:	The immunogen for Anti-C7orf57 Antibody is: synthetic peptide directed towards the N-terminal region of Human C7orf57. Synthetic peptide located within the following region: EKAVDAPPASQIPGLSNLGDHSENLPGTRRYWIKETDSEYVKLAKQGGR
Formulation:	Liquid. Purified antibody supplied in 1x PBS buffer with 0.09% (w/v) sodium azide and 2% sucrose. <i>Note that this product is shipped as lyophilized powder to China customers.</i>
Conjugation:	Unconjugated
Storage:	Store at -20°C as received.
Stability:	Stable for 12 months from date of receipt.
Predicted Protein Size:	32 kDa
Gene Name:	chromosome 7 open reading frame 57
Database Link:	<a href="#">NP_001093629</a> <a href="#">Entrez Gene 136288 Human</a> <a href="#">Q8NEG2</a>
Background:	The function of this protein remains unknown.
Synonyms:	C7orf57
Note:	Immunogen sequence homology: Rat: 100%; Horse: 100%; Human: 100%; Mouse: 100%; Rabbit: 100%; Pig: 93%; Bovine: 93%; Guinea pig: 93%; Dog: 86%



[View online »](#)

## Product images:



Host: Rabbit; Target Name: C7orf57; Sample  
Tissue: 721\_B Whole Cell lysates; Antibody  
Dilution: 1.0ug/ml