

Product datasheet for **TA332204**

C7orf57 Rabbit Polyclonal Antibody

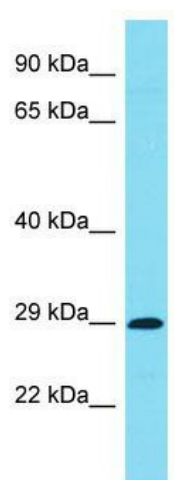
Product data:

Product Type:	Primary Antibodies
Applications:	WB
Recommended Dilution:	WB
Reactivity:	Human
Host:	Rabbit
Isotype:	IgG
Clonality:	Polyclonal
Immunogen:	The immunogen for Anti-C7orf57 Antibody is: synthetic peptide directed towards the C-terminal region of Human C7orf57. Synthetic peptide located within the following region: GQKNSSPTNFSKLISNGYKDEWLQQQQRADSDKRTPKTSRASVLSQSPRD
Formulation:	Liquid. Purified antibody supplied in 1x PBS buffer with 0.09% (w/v) sodium azide and 2% sucrose.
Conjugation:	Unconjugated
Storage:	Store at -20°C as received.
Stability:	Stable for 12 months from date of receipt.
Predicted Protein Size:	32 kDa
Gene Name:	chromosome 7 open reading frame 57
Database Link:	NP_001093629 Entrez Gene 136288 Human Q8NEG2
Background:	The function of this protein remains unknown.
Synonyms:	C7orf57
Note:	Immunogen sequence homology: Human: 100%; Rat: 86%; Horse: 86%; Dog: 82%; Pig: 79%; Guinea pig: 79%; Bovine: 77%



[View online »](#)

Product images:



Host: Rabbit; Target Name: C7orf57; Sample
Tissue: Jurkat Whole Cell lysates; Antibody
Dilution: 1.0ug/ml