

Product datasheet for **TA332201**

Cyp4f17 Rabbit Polyclonal Antibody

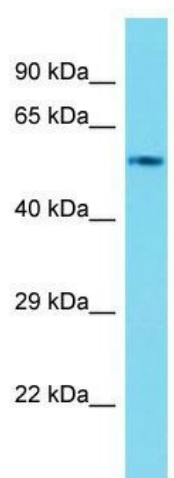
Product data:

Product Type:	Primary Antibodies
Applications:	WB
Recommended Dilution:	WB
Reactivity:	Mouse
Host:	Rabbit
Isotype:	IgG
Clonality:	Polyclonal
Immunogen:	The immunogen for Anti-Cyp4f17 Antibody is: synthetic peptide directed towards the middle region of Mouse Cyp4f17. Synthetic peptide located within the following region: DVL LLSKDE D G K E L S D E D I R A E A D T F M F E G H D T T A S G L S W I L Y N L A R H P E
Formulation:	Liquid. Purified antibody supplied in 1x PBS buffer with 0.09% (w/v) sodium azide and 2% sucrose. <i>Note that this product is shipped as lyophilized powder to China customers.</i>
Conjugation:	Unconjugated
Storage:	Store at -20°C as received.
Stability:	Stable for 12 months from date of receipt.
Predicted Protein Size:	57 kDa
Gene Name:	cytochrome P450, family 4, subfamily f, polypeptide 17
Database Link:	NP_001094915 Entrez Gene 208285 Mouse
Background:	The function of this protein remains unknown.
Synonyms:	EG208285
Note:	Immunogen sequence homology: Pig: 100%; Rat: 100%; Horse: 100%; Human: 100%; Mouse: 100%; Bovine: 100%; Rabbit: 100%; Guinea pig: 100%; Dog: 93%; Sheep: 93%



[View online »](#)

Product images:



Host: Rabbit; Target Name: Cyp4f17; Sample
Tissue: Mouse Kidney lysates; Antibody Dilution:
1.0ug/ml