

## Product datasheet for **TA332200**

### PGPEP1L Rabbit Polyclonal Antibody

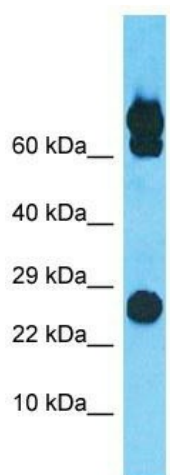
#### Product data:

Product Type:	Primary Antibodies
Applications:	WB
Recommended Dilution:	WB
Reactivity:	Human
Host:	Rabbit
Isotype:	IgG
Clonality:	Polyclonal
Immunogen:	The immunogen for Anti-PGPEP1L Antibody is: synthetic peptide directed towards the N-terminal region of Human PGPEP1L. Synthetic peptide located within the following region: GMDTAAKAIILEQSGKNQGYRDADIRSFWEPPGVCLPGSPDVLESGVCMK
Formulation:	Liquid. Purified antibody supplied in 1x PBS buffer with 0.09% (w/v) sodium azide and 2% sucrose. <i>Note that this product is shipped as lyophilized powder to China customers.</i>
Conjugation:	Unconjugated
Storage:	Store at -20°C as received.
Stability:	Stable for 12 months from date of receipt.
Predicted Protein Size:	21 kDa
Gene Name:	pyroglutamyl-peptidase I-like
Database Link:	<a href="#">NP_001096082</a> <a href="#">Entrez Gene 145814 Human</a> <a href="#">A6NFU8</a>
Background:	The function of this protein remains unknown.
Synonyms:	C330024D12Rik
Note:	Immunogen sequence homology: Human: 100%; Pig: 86%; Horse: 86%; Rabbit: 86%; Rat: 79%; Mouse: 79%; Bovine: 79%
Protein Families:	Druggable Genome



[View online »](#)

## Product images:



Host: Rabbit

Target Name: PGPEP1L

Sample Tissue: COLO205 Cell Lysate

Antibody Dilution: 1.0 $\mu$ g/ml

Host: Rabbit; Target Name: PGPEP1L; Sample Tissue: COLO205 Whole Cell lysates; Antibody Dilution: 1.0 $\mu$ g/ml