

Product datasheet for **TA332199**

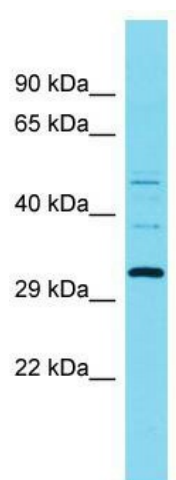
RGD1309748 Rabbit Polyclonal Antibody

Product data:

Product Type:	Primary Antibodies
Applications:	WB
Recommended Dilution:	WB
Reactivity:	Rat
Host:	Rabbit
Isotype:	IgG
Clonality:	Polyclonal
Immunogen:	The immunogen for Anti-RGD1309748 Antibody is: synthetic peptide directed towards the C-terminal region of Rat RGD1309748. Synthetic peptide located within the following region: LISFLCGKVPPrNSRAPPrLTVVSPNRATSTETSSSVETDLQPFREAIA
Formulation:	Liquid. Purified antibody supplied in 1x PBS buffer with 0.09% (w/v) sodium azide and 2% sucrose. <i>Note that this product is shipped as lyophilized powder to China customers.</i>
Conjugation:	Unconjugated
Storage:	Store at -20°C as received.
Stability:	Stable for 12 months from date of receipt.
Predicted Protein Size:	30 kDa
Gene Name:	similar to CG4768-PA
Database Link:	NP_001100442 Entrez Gene 302913 Rat
Background:	The function of this protein remains unknown.
Synonyms:	RGD1309748
Note:	Immunogen sequence homology: Dog: 100%; Pig: 100%; Rat: 100%; Human: 100%; Mouse: 100%; Bovine: 100%; Rabbit: 100%; Guinea pig: 93%; Horse: 86%



[View online »](#)

Product images:

Host: Rabbit; Target Name: RGD1309748; Sample
Tissue: Rat Lung lysates; Antibody Dilution:
1.0ug/ml