

Product datasheet for **TA332197**

Taco1 Rabbit Polyclonal Antibody

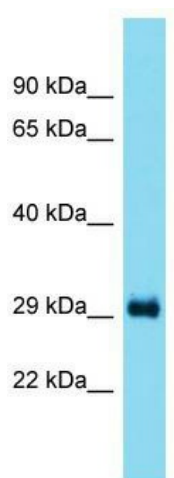
Product data:

Product Type:	Primary Antibodies
Applications:	WB
Recommended Dilution:	WB
Reactivity:	Rat
Host:	Rabbit
Isotype:	IgG
Clonality:	Polyclonal
Immunogen:	The immunogen for Anti-Taco1 Antibody is: synthetic peptide directed towards the middle region of Rat Taco1. Synthetic peptide located within the following region: AVAFAGHNKWSKVRHIKGPKDMERSRIFSKLTLISIRLAVKEGGPNPENNS
Formulation:	Liquid. Purified antibody supplied in 1x PBS buffer with 0.09% (w/v) sodium azide and 2% sucrose. <i>Note that this product is shipped as lyophilized powder to China customers.</i>
Conjugation:	Unconjugated
Storage:	Store at -20°C as received.
Stability:	Stable for 12 months from date of receipt.
Predicted Protein Size:	32 kDa
Gene Name:	translational activator of cytochrome c oxidase I
Database Link:	NP_001101772 Entrez Gene 360645 Rat B2RYT9
Background:	Taco1 acts as a translational activator of mitochondrially-encoded cytochrome c oxidase 1.
Synonyms:	CCDC44
Note:	Immunogen sequence homology: Human: 100%; Dog: 93%; Pig: 93%; Rat: 93%; Horse: 93%; Mouse: 93%; Bovine: 93%; Guinea pig: 93%; Rabbit: 86%



[View online »](#)

Product images:



Host: Rabbit; Target Name: Taco1; Sample Tissue: Rat Liver lysates; Antibody Dilution: 1.0ug/ml