

## Product datasheet for **TA332195**

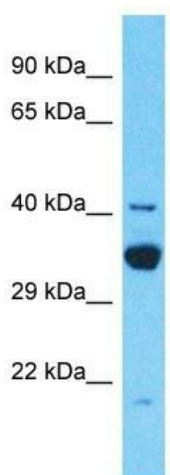
### TDRD12 Rabbit Polyclonal Antibody

#### Product data:

Product Type:	Primary Antibodies
Applications:	WB
Recommended Dilution:	WB
Reactivity:	Human
Host:	Rabbit
Isotype:	IgG
Clonality:	Polyclonal
Immunogen:	The immunogen for Anti-TDRD12 Antibody is: synthetic peptide directed towards the C-terminal region of Human TDRD12. Synthetic peptide located within the following region: DKAVKCNMDSLRLDSPKDKSEKKHHCISLKDTNKRVESSVYWPARGITIIY
Formulation:	Liquid. Purified antibody supplied in 1x PBS buffer with 0.09% (w/v) sodium azide and 2% sucrose.
Conjugation:	Unconjugated
Storage:	Store at -20°C as received.
Stability:	Stable for 12 months from date of receipt.
Predicted Protein Size:	43 kDa
Gene Name:	tudor domain containing 12
Database Link:	<a href="#">NP_001104292</a> <a href="#">Entrez Gene 91646 Human</a> <a href="#">Q587I7</a>
Background:	The function of this protein remains unknown.
Synonyms:	ECAT8
Note:	Immunogen sequence homology: Human: 100%; Pig: 86%; Horse: 86%; Bovine: 86%



[View online »](#)

**Product images:**

Host: Rabbit  
Target Name: TDRD12  
Sample Tissue: 721\_B Cell Lysate  
Antibody Dilution: 1.0 $\mu$ g/ml

Host: Rabbit; Target Name: TDRD12; Sample Tissue: 721\_B Whole Cell lysates; Antibody Dilution: 1.0 $\mu$ g/ml; TDRD12 is supported by BioGPS gene expression data to be expressed in 721\_B