

Product datasheet for **TA332193**

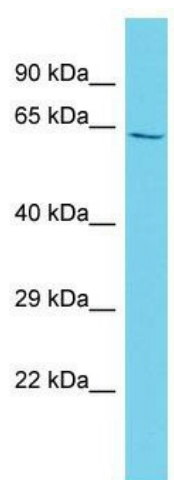
LIN54 Rabbit Polyclonal Antibody

Product data:

Product Type:	Primary Antibodies
Applications:	WB
Recommended Dilution:	WB
Reactivity:	Human
Host:	Rabbit
Isotype:	IgG
Clonality:	Polyclonal
Immunogen:	The immunogen for Anti-LIN54 Antibody is: synthetic peptide directed towards the C-terminal region of Human LIN54. Synthetic peptide located within the following region: NPEAFKPKIGKKGKEGESDRRHSGKCNCKRSGCLKNYCECYEAKIMCSSIC
Formulation:	Liquid. Purified antibody supplied in 1x PBS buffer with 0.09% (w/v) sodium azide and 2% sucrose. <i>Note that this product is shipped as lyophilized powder to China customers.</i>
Conjugation:	Unconjugated
Storage:	Store at -20°C as received.
Stability:	Stable for 12 months from date of receipt.
Predicted Protein Size:	58 kDa
Gene Name:	lin-54 DREAM MuvB core complex component
Database Link:	NP_001108479 Entrez Gene 132660 Human Q6MZP7
Background:	LIN54 is a component of the LIN, or DREAM, complex, an essential regulator of cell cycle genes.
Synonyms:	CXCDC1; JC8.6; MIP120; TCX1
Note:	Immunogen sequence homology: Dog: 100%; Pig: 100%; Rat: 100%; Horse: 100%; Human: 100%; Mouse: 100%; Bovine: 100%; Rabbit: 100%; Zebrafish: 100%; Guinea pig: 100%



[View online »](#)

Product images:

Host: Rabbit; Target Name: LIN54; Sample Tissue: HT1080 Whole Cell lysates; Antibody Dilution: 1.0ug/ml