

## Product datasheet for **TA332191**

### **PPIAL4G Rabbit Polyclonal Antibody**

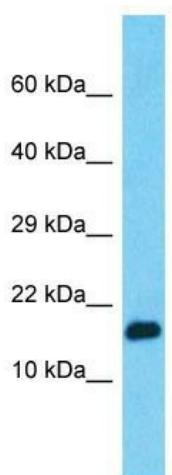
#### **Product data:**

<b>Product Type:</b>	Primary Antibodies
<b>Applications:</b>	WB
<b>Recommended Dilution:</b>	WB
<b>Reactivity:</b>	Human
<b>Host:</b>	Rabbit
<b>Isotype:</b>	IgG
<b>Clonality:</b>	Polyclonal
<b>Immunogen:</b>	The immunogen for Anti-PPIAL4G Antibody is: synthetic peptide directed towards the C-terminal region of Human PPIAL4G. Synthetic peptide located within the following region: NGSQFFICTAKTEWLDGKHVAFGKVKERNIVEAMEHFGYRNSKTSKKIT
<b>Formulation:</b>	Liquid. Purified antibody supplied in 1x PBS buffer with 0.09% (w/v) sodium azide and 2% sucrose. <i>Note that this product is shipped as lyophilized powder to China customers.</i>
<b>Conjugation:</b>	Unconjugated
<b>Storage:</b>	Store at -20°C as received.
<b>Stability:</b>	Stable for 12 months from date of receipt.
<b>Predicted Protein Size:</b>	18 kDa
<b>Gene Name:</b>	peptidylprolyl isomerase A like 4G
<b>Database Link:</b>	<a href="#">NP_001116540</a> <a href="#">Entrez Gene 644591 Human</a> <a href="#">P0DN37</a>
<b>Background:</b>	PPIAL4G is a PPIases accelerate the folding of proteins. It catalyzes the cis-trans isomerization of proline imidic peptide bonds in oligopeptides.
<b>Synonyms:</b>	COAS-2
<b>Note:</b>	Immunogen sequence homology: Human: 100%; Rat: 86%; Dog: 85%; Pig: 85%; Goat: 85%; Horse: 85%; Mouse: 85%; Sheep: 85%; Bovine: 85%; Guinea pig: 85%



[View online »](#)

## Product images:



Host: Rabbit  
Target Name: PPIAL4G  
Sample Tissue: HepG2 Cell Lysate  
Antibody Dilution: 1.0 $\mu$ g/ml

Host: Rabbit; Target Name: PPIAL4G; Sample  
Tissue: HepG2 Whole Cell lysates; Antibody  
Dilution: 1.0 $\mu$ g/ml