

Product datasheet for **TA332190**

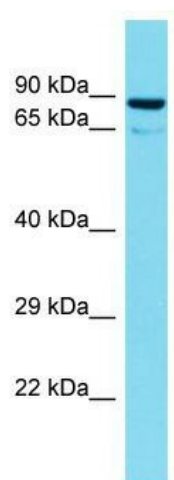
TTLL10 Rabbit Polyclonal Antibody

Product data:

Product Type:	Primary Antibodies
Applications:	WB
Recommended Dilution:	WB
Reactivity:	Human
Host:	Rabbit
Isotype:	IgG
Clonality:	Polyclonal
Immunogen:	The immunogen for Anti-TTLL10 Antibody is: synthetic peptide directed towards the N-terminal region of Human TTLL10. Synthetic peptide located within the following region: PMGSSQEEGLRCQPSQPDHDADGHCGPDLEGAERASATPGPPGLLNHRP
Formulation:	Liquid. Purified antibody supplied in 1x PBS buffer with 0.09% (w/v) sodium azide and 2% sucrose.
Conjugation:	Unconjugated
Storage:	Store at -20°C as received.
Stability:	Stable for 12 months from date of receipt.
Predicted Protein Size:	74 kDa
Gene Name:	tubulin tyrosine ligase like 10
Database Link:	NP_001123517 Entrez Gene 254173 Human Q6ZVT0
Background:	TTLL10 inactive polyglycyclase.
Synonyms:	TTLL5
Note:	Immunogen sequence homology: Human: 100%



[View online »](#)

Product images:


Host: Rabbit; Target Name: TTL10; Sample
Tissue: 721_B Whole Cell lysates; Antibody
Dilution: 1.0ug/ml