

Product datasheet for **TA332189**

AHCYL2 Rabbit Polyclonal Antibody

Product data:

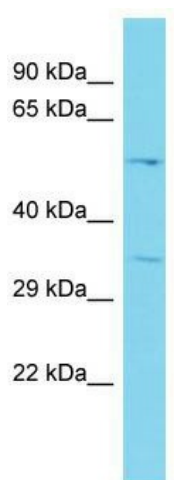
Product Type:	Primary Antibodies
Applications:	WB
Recommended Dilution:	WB
Reactivity:	Human
Host:	Rabbit
Isotype:	IgG
Clonality:	Polyclonal
Immunogen:	The immunogen for Anti-AHCYL2 Antibody is: synthetic peptide directed towards the N-terminal region of Human AHCYL2. Synthetic peptide located within the following region: TDSYSSAASYTDSSDDETSRDKQQKNSKGSSDFCVKNIKQAEFGRREIE
Formulation:	Liquid. Purified antibody supplied in 1x PBS buffer with 0.09% (w/v) sodium azide and 2% sucrose. <i>Note that this product is shipped as lyophilized powder to China customers.</i>
Conjugation:	Unconjugated
Storage:	Store at -20°C as received.
Stability:	Stable for 12 months from date of receipt.
Predicted Protein Size:	55 kDa
Gene Name:	adenosylhomocysteinase like 2
Database Link:	NP_001124195 Entrez Gene 23382 Human Q96HN2
Background:	The protein encoded by this gene acts as a homotetramer and may be involved in the conversion of S-adenosyl-L-homocysteine to L-homocysteine and adenosine. Several transcript variants encoding different isoforms have been found for this gene.
Synonyms:	ADOHCYASE3; IRBIT2
Note:	Immunogen sequence homology: Dog: 100%; Pig: 100%; Rat: 100%; Horse: 100%; Human: 100%; Mouse: 100%; Bovine: 100%; Rabbit: 100%; Zebrafish: 100%; Guinea pig: 100%
Protein Families:	Druggable Genome



[View online »](#)

Protein Pathways: Cysteine and methionine metabolism, Metabolic pathways, Selenoamino acid metabolism

Product images:



Host: Rabbit; Target Name: AHCYL2; Sample
Tissue: Jurkat Whole Cell lysates; Antibody
Dilution: 1.0ug/ml